

**Ecological Study Area**

**1/2 Mile Buffer of the Study Area**

**2016 NLCD Land Cover**

- Open Water
- Developed, Open Space
- Developed, Low Intensity
- Developed, Medium Intensity
- Developed, High Intensity
- Barren Land
- Deciduous Forest
- Evergreen Forest
- Mixed Forest
- Shrub/Scrub
- Herbaceous
- Hay/Pasture
- Cultivated Crop
- Woody Wetland
- Emergent Herbaceous Wetland

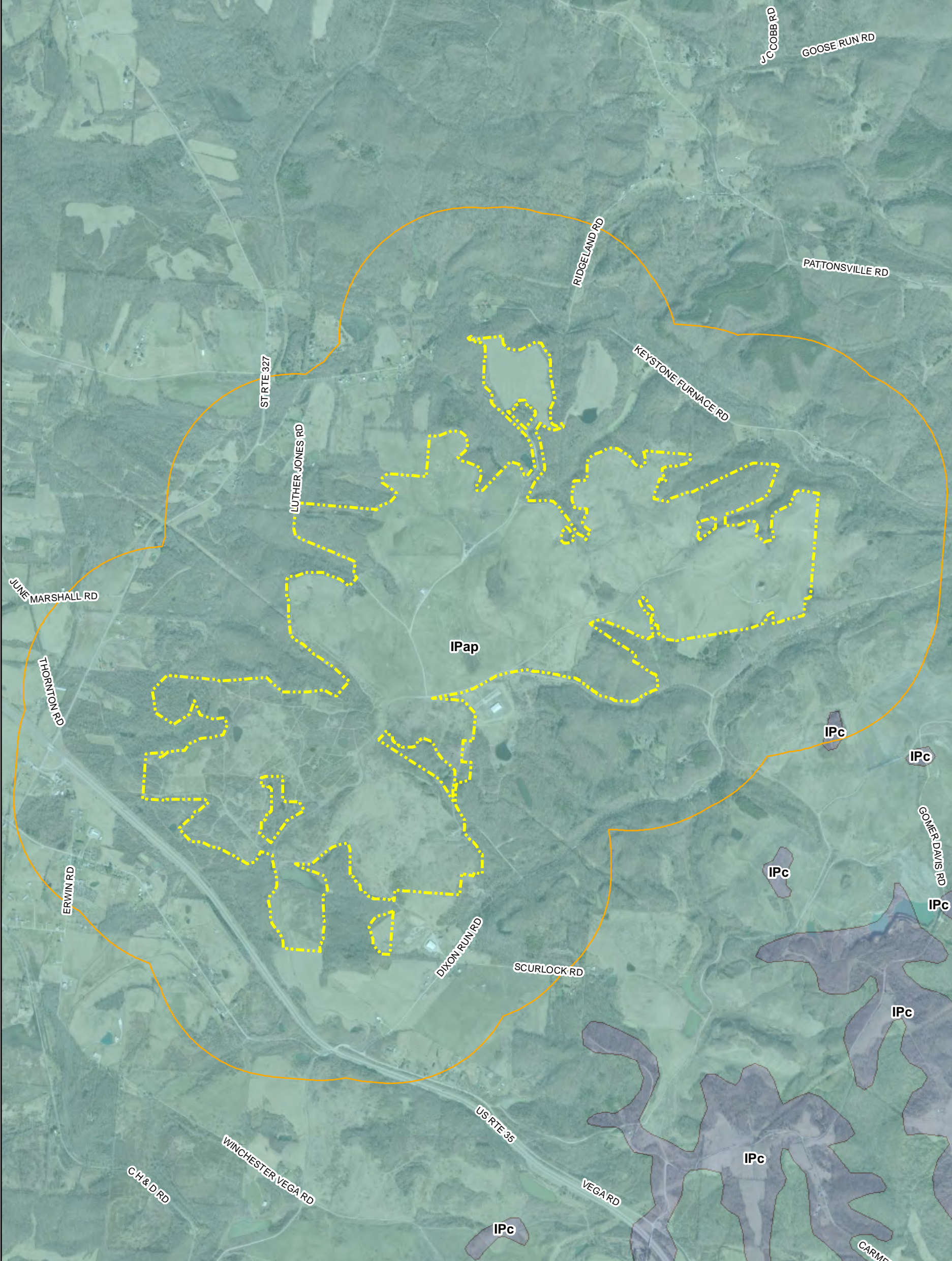
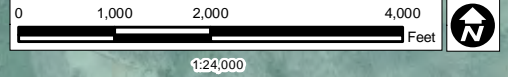
**Note:**  
The aerial photo was acquired from the Ohio Statewide Imagery Program (OSIP).  
Aerial photography dated 2020.



**DISCLAIMER**  
Hull & Associates, LLC (Hull) has furnished this map to the company identified in the title block (Client) for its sole and exclusive use as a preliminary planning and screening tool and field verification is necessary to confirm these data. This map is reproduced from geospatial information compiled from third-party sources which may change over time. Areas depicted by the map are approximate and may not be accurate to mapping, surveying or engineering standards. Hull makes no representation or guarantee as to the content, accuracy, timeliness or completeness of any information or spatial location depicted on this map. This map is provided without warranty of any kind, including but not limited to, the implied warranties of merchantability or fitness for a particular purpose. In no event will Hull, its owners, officers, employees or agents, be liable for damages of any kind arising out of the use of this map by Client or any other party.

September 2021  
Dixon Run Solar Project  
SunEnergy1  
**Land Use Map**  
Wellston, Mulga, Oak Hill, and Rio Grande Townships  
Jackson County, Ohio

Figure  
**5**



Ecological Study Area

1/2 Mile Buffer of the Study Area

**Bedrock Geology Type**

IPap: Allegheny and Pottsville Groups, Undivided

IPc: Conemaugh Group

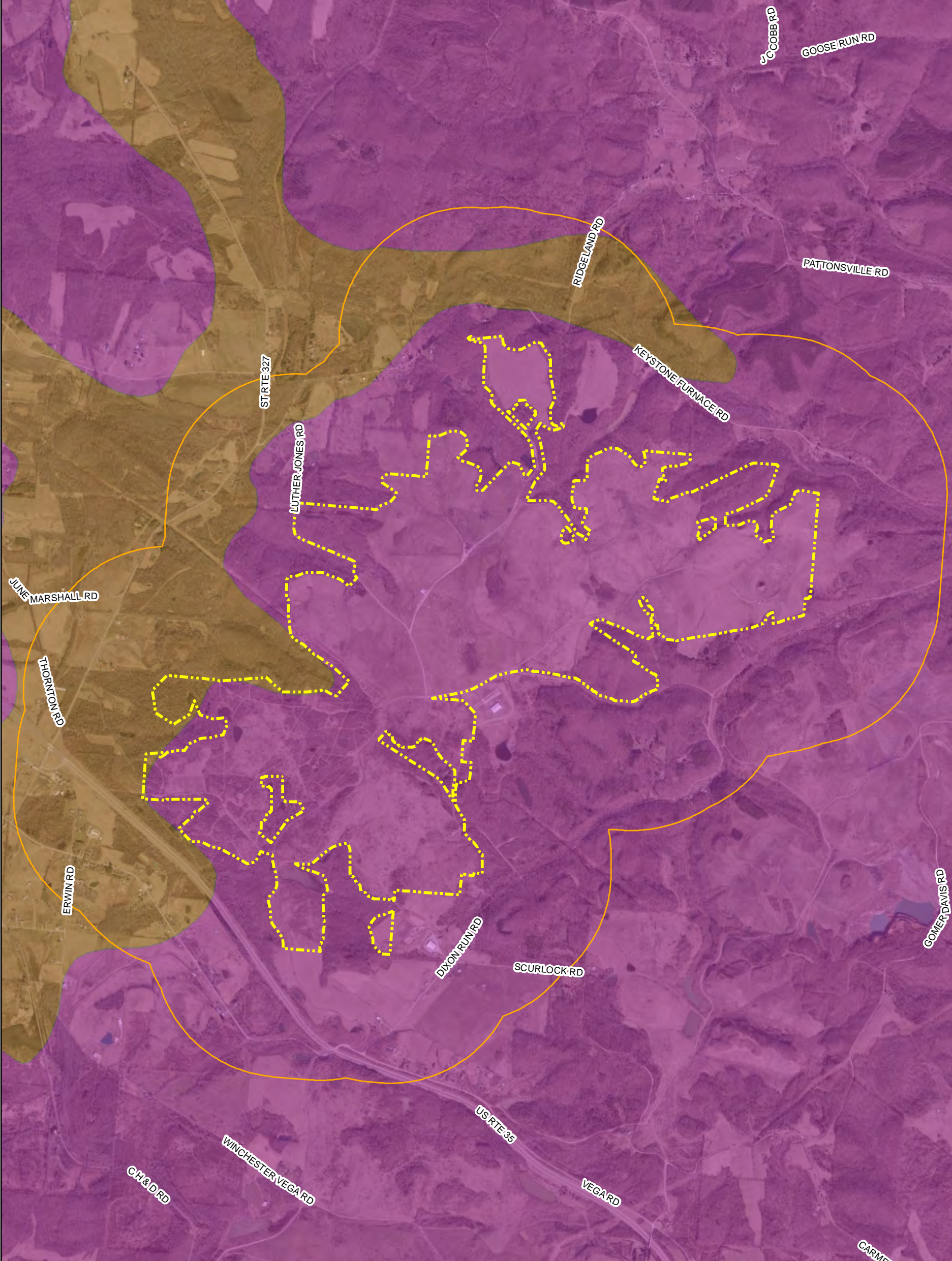
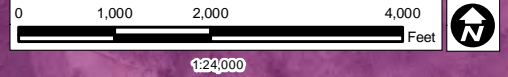
**Note:**  
The aerial photo was acquired from the Ohio Statewide Imagery Program (OSIP).  
Aerial photography dated 2020.



**DISCLAIMER**  
Hull & Associates, LLC (Hull) has furnished this map to the company identified in the title block (Client) for its sole and exclusive use as a preliminary planning and screening tool and field verification is necessary to confirm these data. This map is reproduced from geospatial information compiled from third-party sources which may change over time. Areas depicted by the map are approximate and may not be accurate to mapping, surveying or engineering standards. Hull makes no representation or guarantee as to the content, accuracy, timeliness or completeness of any information or spatial location depicted on this map. This map is provided without warranty of any kind, including but not limited to, the implied warranties of merchantability or fitness for a particular purpose. In no event will Hull, its owners, officers, employees or agents, be liable for damages of any kind arising out of the use of this map by Client or any other party.

September 2021  
Dixon Run Solar Project  
SunEnergy1  
**Bedrock  
Geology Map**  
Wellston, Mulga, Oak Hill, and Rio Grande Townships  
Jackson County, Ohio

Figure  
**6**



Ecological Study Area

1/2 Mile Buffer of the Study Area

**Glacial Deposits**

Cc - Colluvium derived from local bedrock in unglaciated areas

KI - Lacustrine Deposits

**Note:**  
The aerial photo was acquired from the Ohio Statewide Imagery Program (OSIP).  
Aerial photography dated 2020.

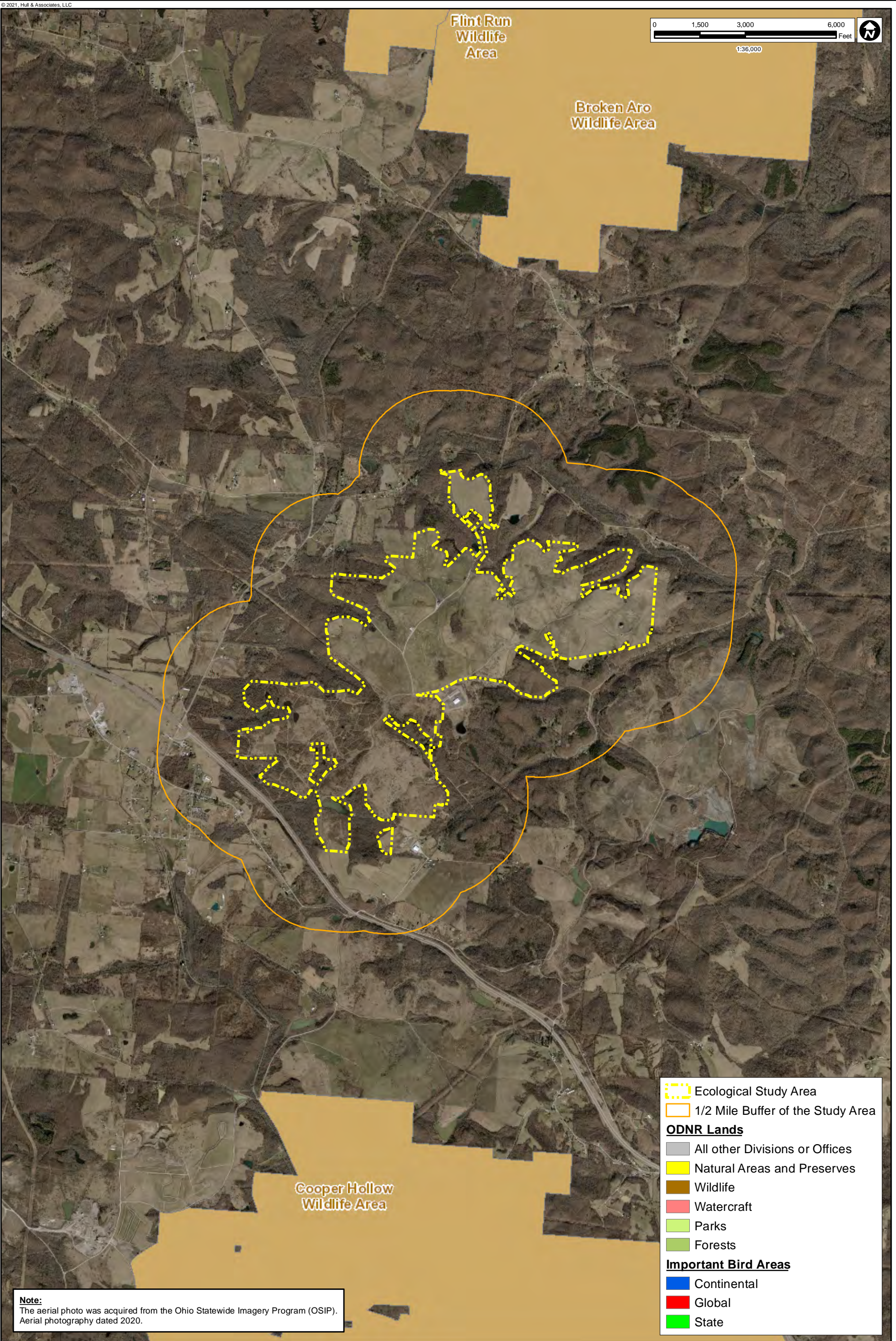
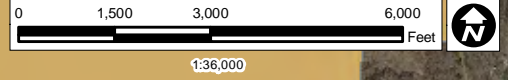


**DISCLAIMER**  
Hull & Associates, LLC (Hull) has furnished this map to the company identified in the title block (Client) for its sole and exclusive use as a preliminary planning and screening tool and field verification is necessary to confirm these data. This map is reproduced from geospatial information compiled from third-party sources which may change over time. Areas depicted by the map are approximate and may not be accurate to mapping, surveying or engineering standards. Hull makes no representation or guarantee as to the content, accuracy, timeliness or completeness of any information or spatial location depicted on this map. This map is provided without warranty of any kind, including but not limited to, the implied warranties of merchantability or fitness for a particular purpose. In no event will Hull, its owners, officers, employees or agents, be liable for damages of any kind arising out of the use of this map by Client or any other party.

September 2021		Figure <b>7</b>
Dixon Run Solar Project SunEnergy1		
<b>Glacial Deposits Map</b>		
Wellston, Mulga, Oak Hill, and Rio Grande Townships Jackson County, Ohio		

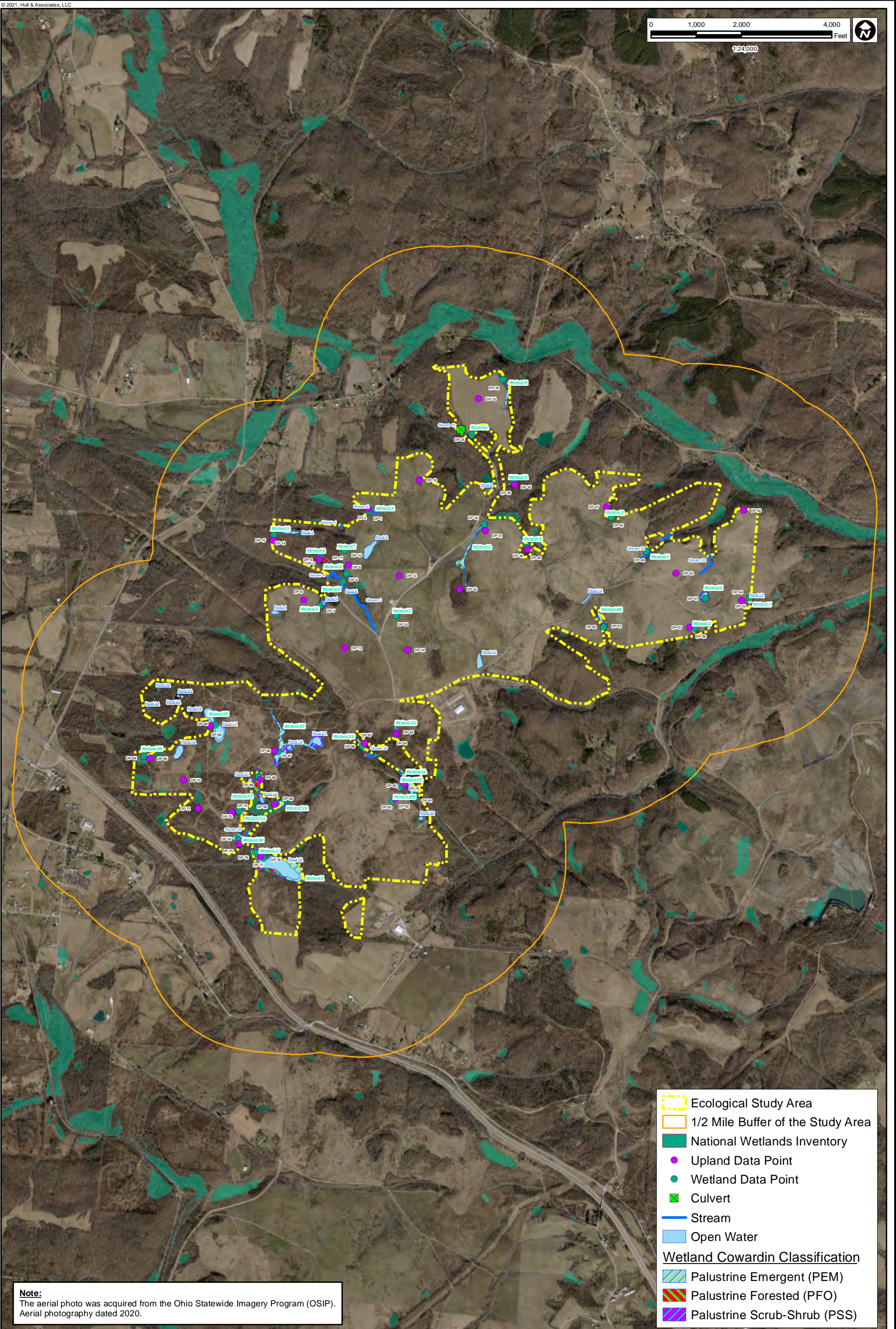
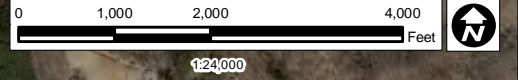
Flint Run  
Wildlife  
Area

Broken Aro  
Wildlife Area



- Ecological Study Area
- 1/2 Mile Buffer of the Study Area
- ODNR Lands**
- All other Divisions or Offices
- Natural Areas and Preserves
- Wildlife
- Watercraft
- Parks
- Forests
- Important Bird Areas**
- Continental
- Global
- State

**Note:**  
The aerial photo was acquired from the Ohio Statewide Imagery Program (OSIP).  
Aerial photography dated 2020.



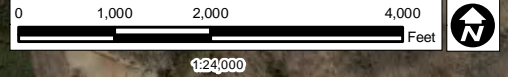
- Ecological Study Area
- 1/2 Mile Buffer of the Study Area
- National Wetlands Inventory
- Upland Data Point
- Wetland Data Point
- Culvert
- Stream
- Open Water
- Wetland Cowardin Classification**
- Palustrine Emergent (PEM)
- Palustrine Forested (PFO)
- Palustrine Scrub-Shrub (PSS)

**Note:**  
The aerial photo was acquired from the Ohio Statewide Imagery Program (OSIP).  
Aerial photography dated 2020.



**DISCLAIMER**  
Hull & Associates, LLC (Hull) has furnished this map to the company identified in the title block (Client) for its sole and exclusive use as a preliminary planning and screening tool and field verification is necessary to confirm these data. This map is reproduced from geospatial information compiled from third-party sources which may change over time. Areas depicted by the map are approximate and may not be accurate to mapping, surveying or engineering standards. Hull makes no representation or guarantee as to the content, accuracy, timeliness or completeness of any information or spatial location depicted on this map. This map is provided without warranty of any kind, including but not limited to, the implied warranties of merchantability or fitness for a particular purpose. In no event will Hull, its owners, officers, employees or agents, be liable for damages of any kind arising out of the use of this map by Client or any other party.




September 2021		Figure <b>10</b>
Dixon Run Solar Project SunEnergy1		
<b>Surface Water Delineation Map</b>		
Wellston, Mulga, Oak Hill, and Rio Grande Townships Jackson County, Ohio		



Mulga Run-Little  
Raccoon Creek  
050901010403

Dickason Run  
050901010402

Headwaters  
Symmes Creek  
050901010803

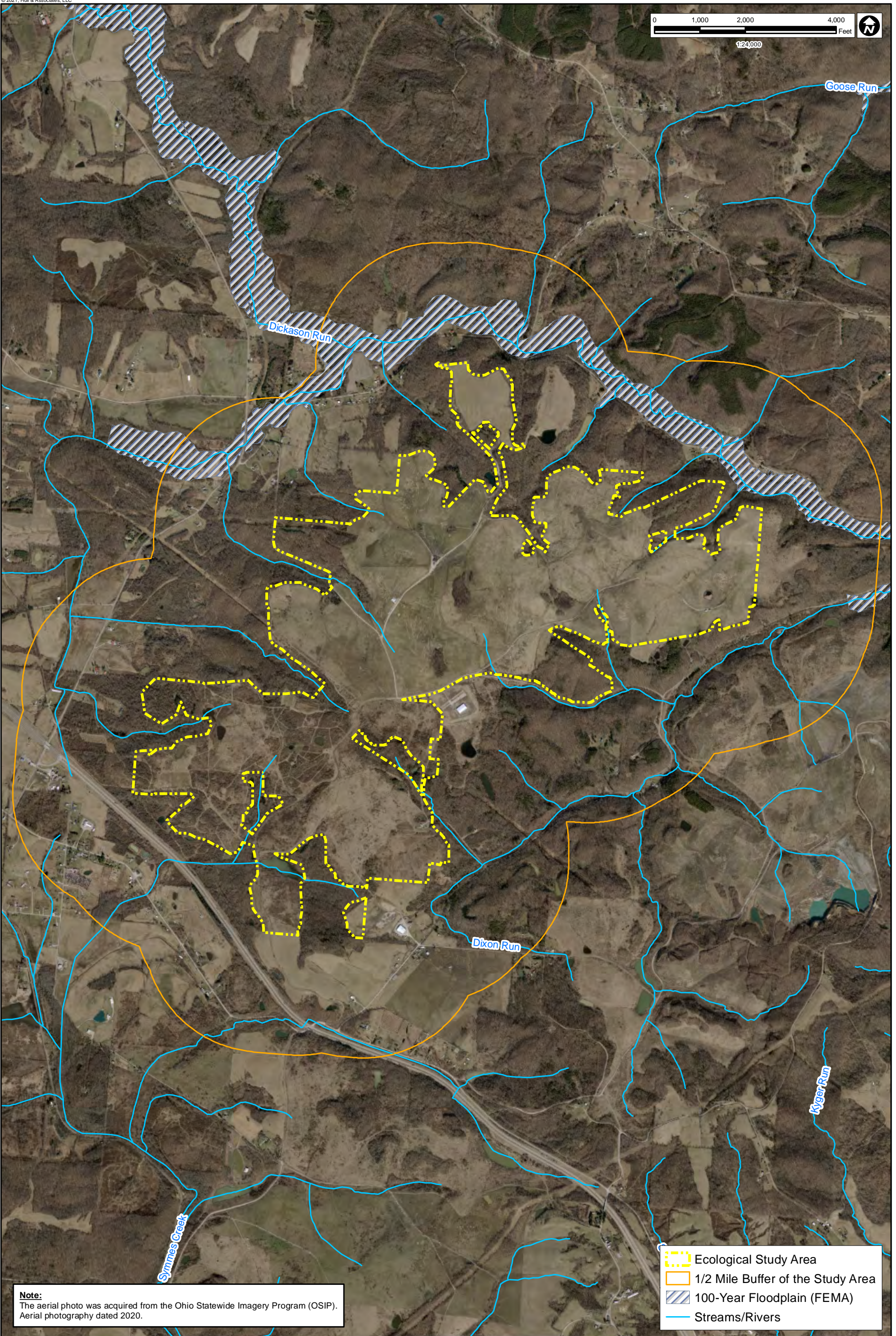
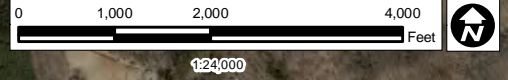
-  Ecological Study Area
-  1/2 Mile Buffer of the Study Area
-  Ohio HUC-12 Watersheds





**Note:**  
The aerial photo was acquired from the Ohio Statewide Imagery Program (OSIP).  
Aerial photography dated 2020.



**DISCLAIMER**  
Hull & Associates, LLC (Hull) has furnished this map to the company identified in the title block (Client) for its sole and exclusive use as a preliminary planning and screening tool and field verification is necessary to confirm these data. This map is reproduced from geospatial information compiled from third-party sources which may change over time. Areas depicted by the map are approximate and may not be accurate to mapping, surveying or engineering standards. Hull makes no representation or guarantee as to the content, accuracy, timeliness or completeness of any information or spatial location depicted on this map. This map is provided without warranty of any kind, including but not limited to, the implied warranties of merchantability or fitness for a particular purpose. In no event will Hull, its owners, officers, employees or agents, be liable for damages of any kind arising out of the use of this map by Client or any other party.

September 2021		Figure <b>11</b>
Dixon Run Solar Project SunEnergy1 <b>Watershed Boundaries Map</b>		
Wellston, Mulga, Oak Hill, and Rio Grande Townships Jackson County, Ohio		



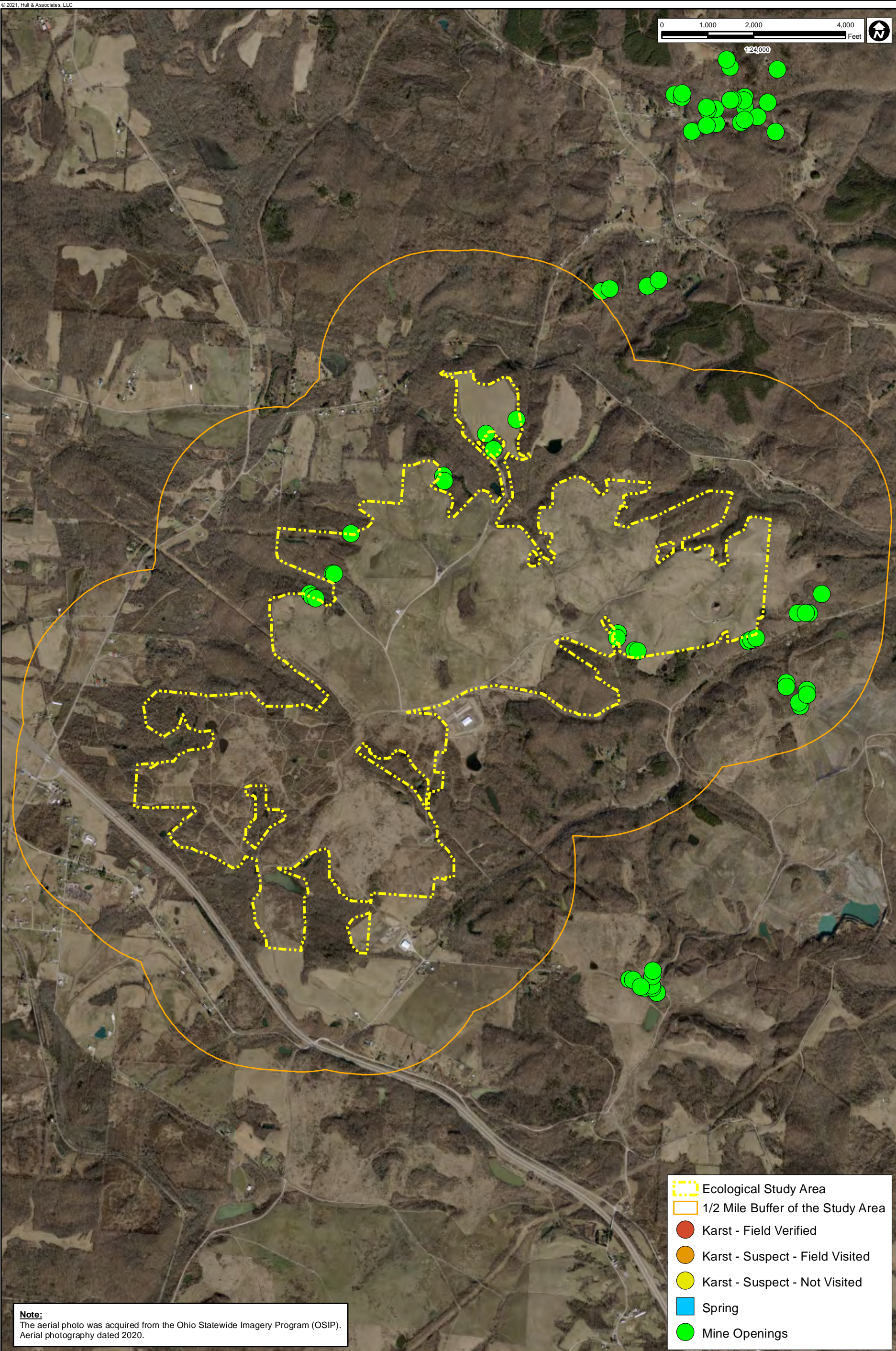
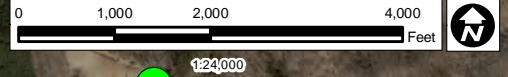
-  Ecological Study Area
-  1/2 Mile Buffer of the Study Area
-  100-Year Floodplain (FEMA)
-  Streams/Rivers

**Note:**  
The aerial photo was acquired from the Ohio Statewide Imagery Program (OSIP).  
Aerial photography dated 2020.



**DISCLAIMER**  
Hull & Associates, LLC (Hull) has furnished this map to the company identified in the title block (Client) for its sole and exclusive use as a preliminary planning and screening tool and field verification is necessary to confirm these data. This map is reproduced from geospatial information compiled from third-party sources which may change over time. Areas depicted by the map are approximate and may not be accurate to mapping, surveying or engineering standards. Hull makes no representation or guarantee as to the content, accuracy, timeliness or completeness of any information or spatial location depicted on this map. This map is provided without warranty of any kind, including but not limited to, the implied warranties of merchantability or fitness for a particular purpose. In no event will Hull, its owners, officers, employees or agents, be liable for damages of any kind arising out of the use of this map by Client or any other party.

September 2021		Figure <b>12</b>
Dixon Run Solar Project SunEnergy1		
<b>100-Year Floodplain and National Hydrography Dataset Map</b>		
Wellston, Mulga, Oak Hill, and Rio Grande Townships Jackson County, Ohio		



- Ecological Study Area
- 1/2 Mile Buffer of the Study Area
- Karst - Field Verified
- Karst - Suspect - Field Visited
- Karst - Suspect - Not Visited
- Spring
- Mine Openings

**Note:**  
The aerial photo was acquired from the Ohio Statewide Imagery Program (OSIP).  
Aerial photography dated 2020.

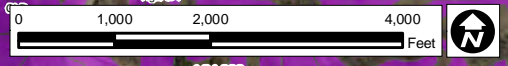


**DISCLAIMER**  
Hull & Associates, LLC (Hull) has furnished this map to the company identified in the title block (Client) for its sole and exclusive use as a preliminary planning and screening tool and field verification is necessary to confirm these data. This map is reproduced from geospatial information compiled from third-party sources which may change over time. Areas depicted by the map are approximate and may not be accurate to mapping, surveying or engineering standards. Hull makes no representation or guarantee as to the content, accuracy, timeliness or completeness of any information or spatial location depicted on this map. This map is provided without warranty of any kind, including but not limited to, the implied warranties of merchantability or fitness for a particular purpose. In no event will Hull, its owners, officers, employees or agents, be liable for damages of any kind arising out of the use of this map by Client or any other party.

September 2021  
Dixon Run Solar Project  
SunEnergy1  
**Subsurface Openings and  
Karst Topography Map**  
Wellston, Mulga, Oak Hill, and Rio Grande Townships  
Jackson County, Ohio

Figure  
**13**



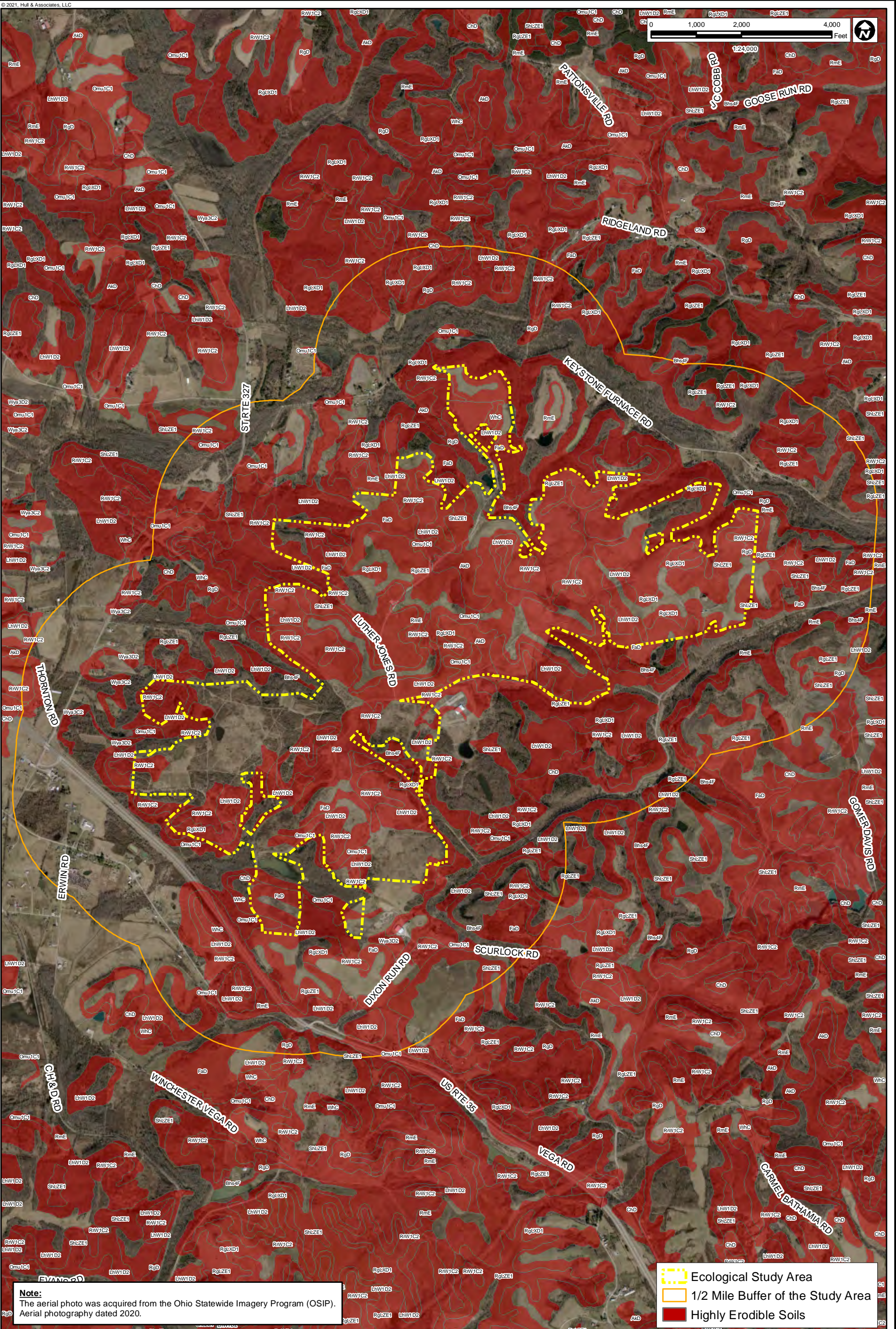
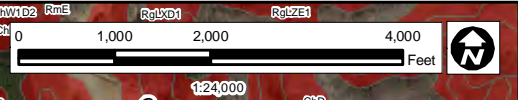


**Note:**  
The aerial photo was acquired from the Ohio Statewide Imagery Program (OSIP).  
Aerial photography dated 2020.

	Ecological Study Area
	1/2 Mile Buffer of the Study Area
	Soils with Slopes Greater than 12%

**DISCLAIMER**  
Hull & Associates, LLC (Hull) has furnished this map to the company identified in the title block (Client) for its sole and exclusive use as a preliminary planning and screening tool and field verification is necessary to confirm these data. This map is reproduced from geospatial information compiled from third-party sources which may change over time. Areas depicted by the map are approximate and may not be accurate to mapping, surveying or engineering standards. Hull makes no representation or guarantee as to the content, accuracy, timeliness or completeness of any information or spatial location depicted on this map. This map is provided without warranty of any kind, including but not limited to, the implied warranties of merchantability or fitness for a particular purpose. In no event will Hull, its owners, officers, employees or agents, be liable for damages of any kind arising out of the use of this map by Client or any other party.

September 2021		Figure <b>14</b>
Dixon Run Solar Project SunEnergy1		
<b>Soils with Slopes Greater than 12%</b>		
Wellston, Mulga, Oak Hill, and Rio Grande Townships Jackson County, Ohio		



**Note:**  
The aerial photo was acquired from the Ohio Statewide Imagery Program (OSIP).  
Aerial photography dated 2020.

- Ecological Study Area
- 1/2 Mile Buffer of the Study Area
- Highly Erodible Soils



**DISCLAIMER**  
Hull & Associates, LLC (Hull) has furnished this map to the company identified in the title block (Client) for its sole and exclusive use as a preliminary planning and screening tool and field verification is necessary to confirm these data. This map is reproduced from geospatial information compiled from third-party sources which may change over time. Areas depicted by the map are approximate and may not be accurate to mapping, surveying or engineering standards. Hull makes no representation or guarantee as to the content, accuracy, timeliness or completeness of any information or spatial location depicted on this map. This map is provided without warranty of any kind, including but not limited to, the implied warranties of merchantability or fitness for a particular purpose. In no event will Hull, its owners, officers, employees or agents, be liable for damages of any kind arising out of the use of this map by Client or any other party.

September 2021		Figure <b>15</b>
Dixon Run Solar Project SunEnergy1 <b>Highly Erodible Soils Map</b>		
Wellston, Mulga, Oak Hill, and Rio Grande Townships Jackson County, Ohio		