


**Note:**  
The aerial photo was acquired from the Ohio Statewide Imagery Program (OSIP).  
Aerial photography dated 2020.

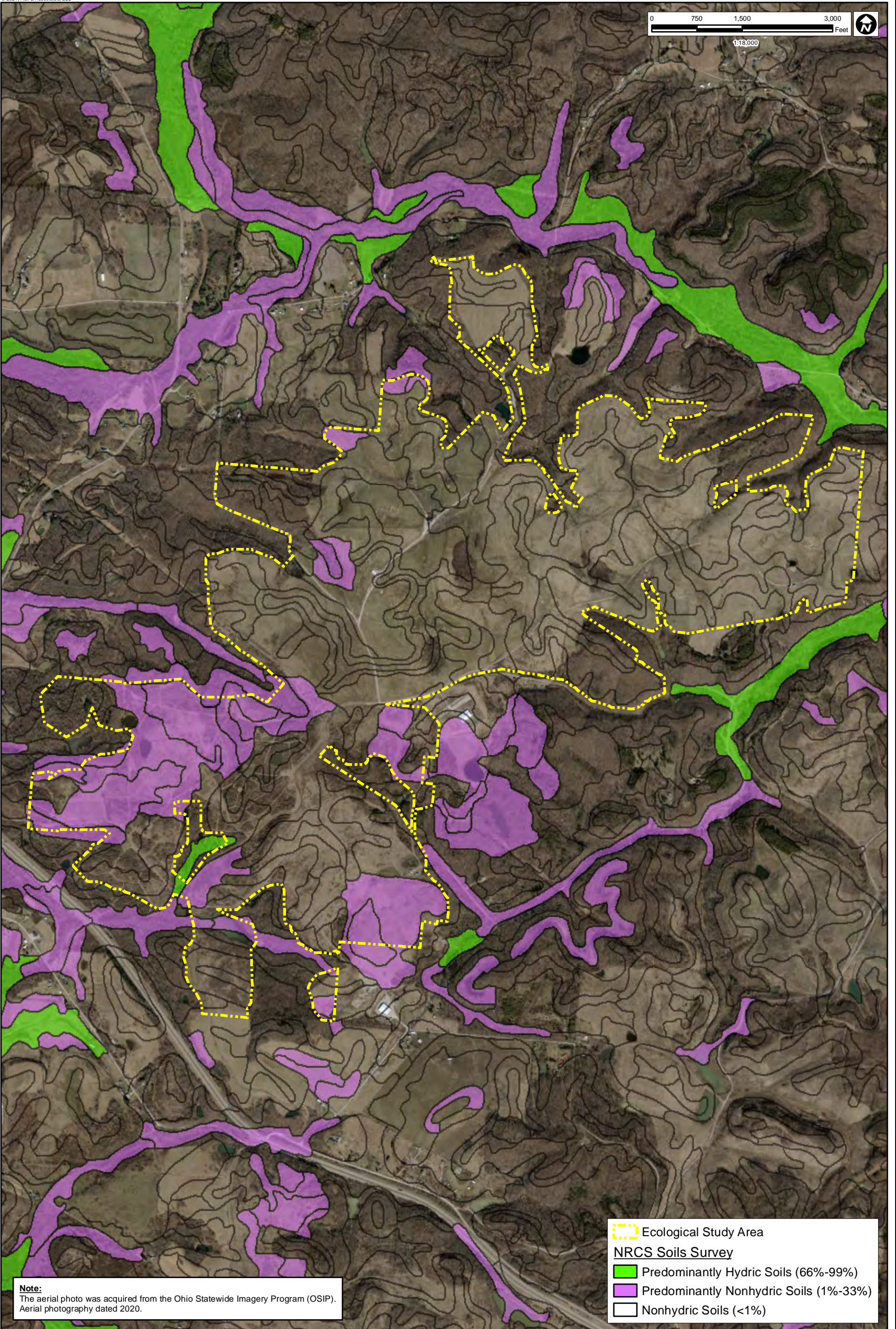
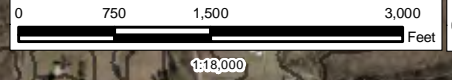
 Ecological Study Area




**DISCLAIMER**  
Hull & Associates, LLC (Hull) has furnished this map to the company identified in the title block (Client) for its sole and exclusive use as a preliminary planning and screening tool and field verification is necessary to confirm these data. This map is reproduced from geospatial information compiled from third-party sources which may change over time. Areas depicted by the map are approximate and may not be accurate to mapping, surveying or engineering standards. Hull makes no representation or guarantee as to the content, accuracy, timeliness or completeness of any information or spatial location depicted on this map. This map is provided without warranty of any kind, including but not limited to, the implied warranties of merchantability or fitness for a particular purpose. In no event will Hull, its owners, officers, employees or agents, be liable for damages of any kind arising out of the use of this map by Client or any other party.


September 2021		Figure <b>2</b>
Dixon Run Solar Project SunEnergy1 <b>Project Vicinity Map</b>		
Wellston, Mulga, Oak Hill, and Rio Grande Townships Jackson County, Ohio		




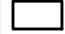


 Ecological Study Area

**NRCS Soils Survey**

 Predominantly Hydric Soils (66%-99%)

 Predominantly Nonhydric Soils (1%-33%)

 Nonhydric Soils (<1%)

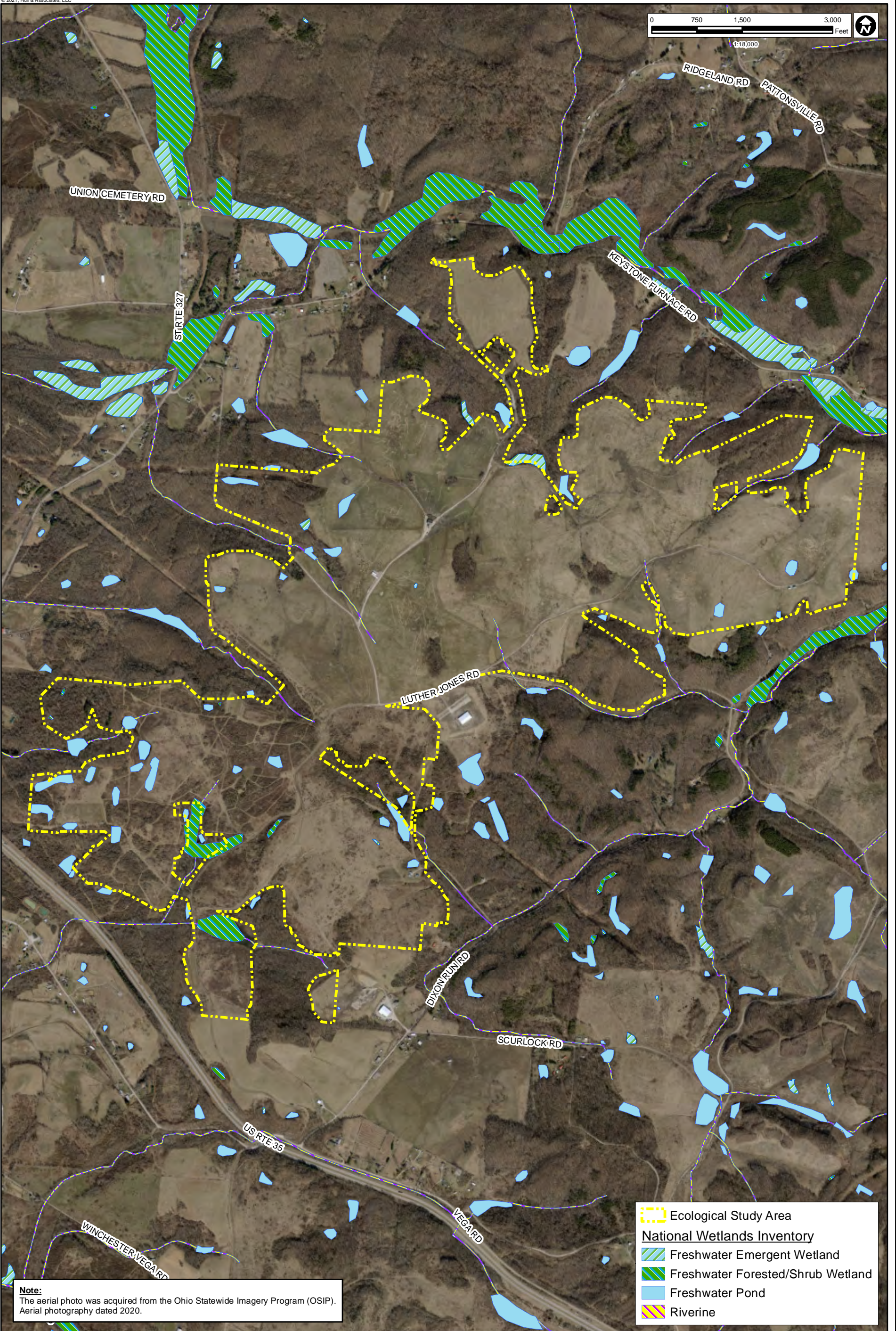
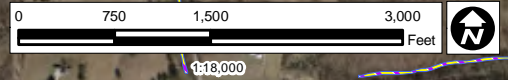
**Note:**  
The aerial photo was acquired from the Ohio Statewide Imagery Program (OSIP).  
Aerial photography dated 2020.








**DISCLAIMER**  
Hull & Associates, LLC (Hull) has furnished this map to the company identified in the title block (Client) for its sole and exclusive use as a preliminary planning and screening tool and field verification is necessary to confirm these data. This map is reproduced from geospatial information compiled from third-party sources which may change over time. Areas depicted by the map are approximate and may not be accurate to mapping, surveying or engineering standards. Hull makes no representation or guarantee as to the content, accuracy, timeliness or completeness of any information or spatial location depicted on this map. This map is provided without warranty of any kind, including but not limited to, the implied warranties of merchantability or fitness for a particular purpose. In no event will Hull, its owners, officers, employees or agents, be liable for damages of any kind arising out of the use of this map by Client or any other party.

September 2021		Figure <b>3</b>
Dixon Run Solar Project SunEnergy1		
<b>Soils Map</b>		
Wellston, Mulga, Oak Hill, and Rio Grande Townships Jackson County, Ohio		





**Note:**  
The aerial photo was acquired from the Ohio Statewide Imagery Program (OSIP).  
Aerial photography dated 2020.

-  Ecological Study Area
- National Wetlands Inventory**
-  Freshwater Emergent Wetland
-  Freshwater Forested/Shrub Wetland
-  Freshwater Pond
-  Riverine

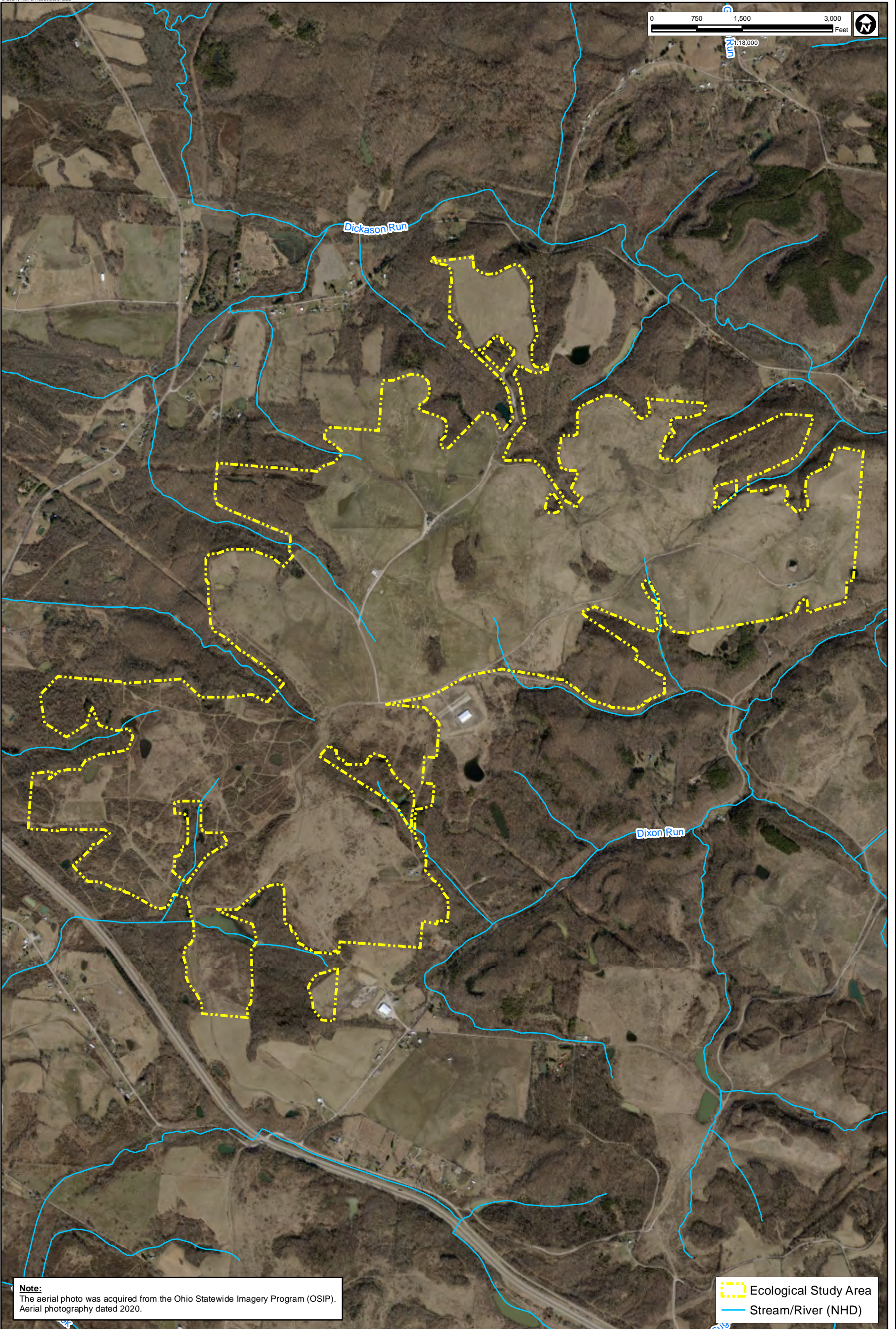
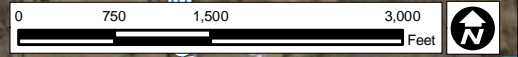


**DISCLAIMER**  
Hull & Associates, LLC (Hull) has furnished this map to the company identified in the title block (Client) for its sole and exclusive use as a preliminary planning and screening tool and field verification is necessary to confirm these data. This map is reproduced from geospatial information compiled from third-party sources which may change over time. Areas depicted by the map are approximate and may not be accurate to mapping, surveying or engineering standards. Hull makes no representation or guarantee as to the content, accuracy, timeliness or completeness of any information or spatial location depicted on this map. This map is provided without warranty of any kind, including but not limited to, the implied warranties of merchantability or fitness for a particular purpose. In no event will Hull, its owners, officers, employees or agents, be liable for damages of any kind arising out of the use of this map by Client or any other party.



September 2021  
Dixon Run Solar Project  
SunEnergy1  
**National Wetlands Inventory  
Map**  
Wellston, Mulga, Oak Hill, and Rio Grande Townships  
Jackson County, Ohio

Figure  
**4**





**Note:**  
The aerial photo was acquired from the Ohio Statewide Imagery Program (OSIP).  
Aerial photography dated 2020.

 Ecological Study Area  
 Stream/River (NHD)

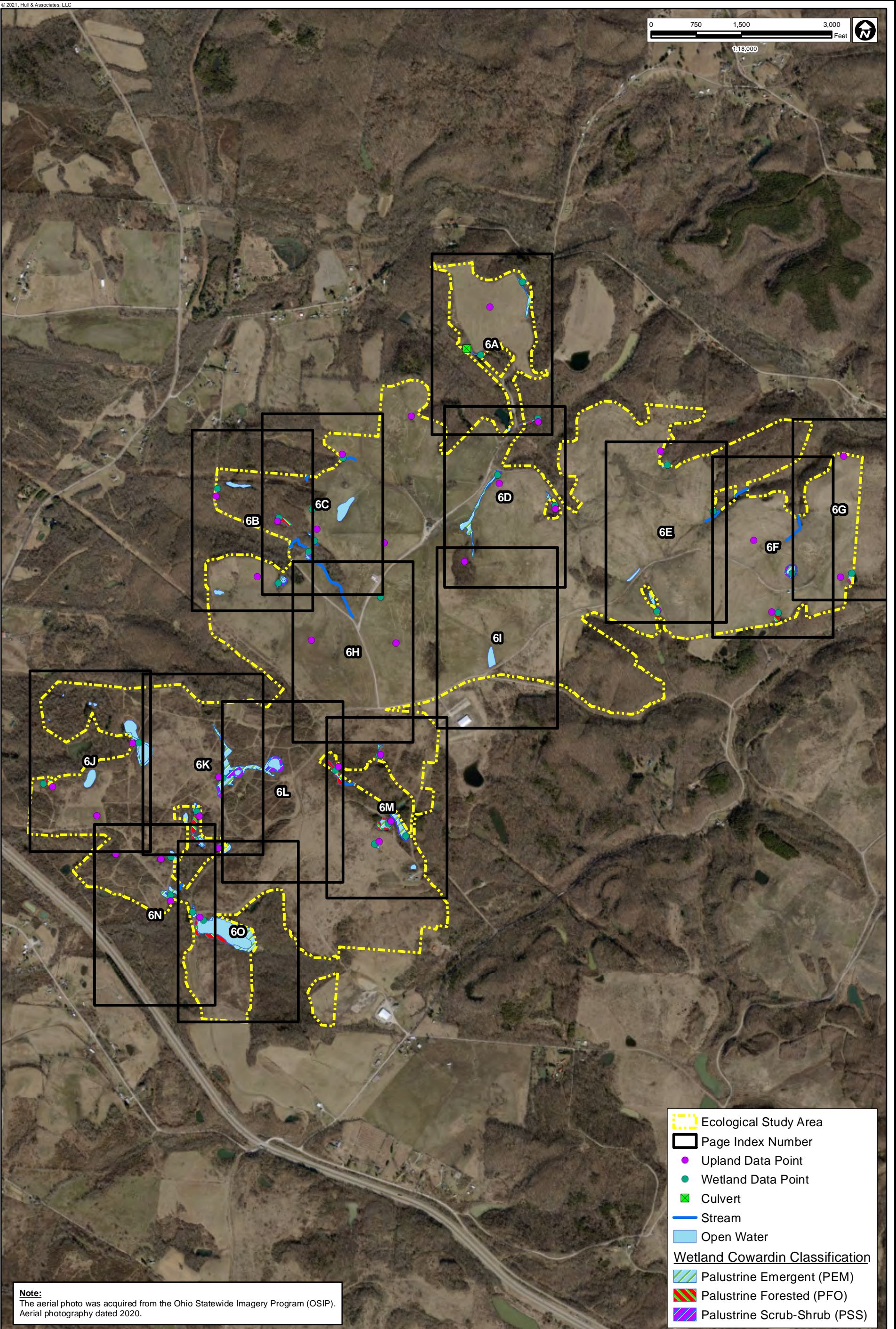
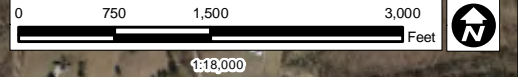
**HULL**  
Environment / Energy / Infrastructure

**DISCLAIMER**  
Hull & Associates, LLC (Hull) has furnished this map to the company identified in the title block (Client) for its sole and exclusive use as a preliminary planning and screening tool and field verification is necessary to confirm these data. This map is reproduced from geospatial information compiled from third-party sources which may change over time. Areas depicted by the map are approximate and may not be accurate to mapping, surveying or engineering standards. Hull makes no representation or guarantee as to the content, accuracy, timeliness or completeness of any information or spatial location depicted on this map. This map is provided without warranty of any kind, including but not limited to, the implied warranties of merchantability or fitness for a particular purpose. In no event will Hull, its owners, officers, employees or agents, be liable for damages of any kind arising out of the use of this map by Client or any other party.

September 2021  
Dixon Run Solar Project  
SunEnergy1  
**National Hydrography Dataset  
Map**  
Wellston, Mulga, Oak Hill, and Rio Grande Townships  
Jackson County, Ohio

Figure  
**5**





Ecological Study Area  
 Page Index Number  
 Upland Data Point  
 Wetland Data Point  
 Culvert  
 Stream  
 Open Water  
**Wetland Cowardin Classification**  
 Palustrine Emergent (PEM)  
 Palustrine Forested (PFO)  
 Palustrine Scrub-Shrub (PSS)

**Note:**  
The aerial photo was acquired from the Ohio Statewide Imagery Program (OSIP).  
Aerial photography dated 2020.



**DISCLAIMER**  
Hull & Associates, LLC (Hull) has furnished this map to the company identified in the title block (Client) for its sole and exclusive use as a preliminary planning and screening tool and field verification is necessary to confirm these data. This map is reproduced from geospatial information compiled from third-party sources which may change over time. Areas depicted by the map are approximate and may not be accurate to mapping, surveying or engineering standards. Hull makes no representation or guarantee as to the content, accuracy, timeliness or completeness of any information or spatial location depicted on this map. This map is provided without warranty of any kind, including but not limited to, the implied warranties of merchantability or fitness for a particular purpose. In no event will Hull, its owners, officers, employees or agents, be liable for damages of any kind arising out of the use of this map by Client or any other party.

September 2021  
Dixon Run Solar Project  
SunEnergy1  
**Surface Water Delineation Map**  
Wellston, Mulga, Oak Hill, and Rio Grande Townships  
Jackson County, Ohio

Figure  
**6**





- Ecological Study Area
- Upland Data Point
- Wetland Data Point
- Culvert
- Stream
- Open Water
- Wetland Cowardin Classification**
- Palustrine Emergent (PEM)
- Palustrine Forested (PFO)
- Palustrine Scrub-Shrub (PSS)



**Note:**  
The aerial photo was acquired from the Ohio Statewide Imagery Program (OSIP).  
Aerial photography dated 2020.

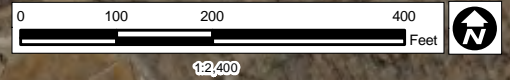


**DISCLAIMER**  
Hull & Associates, LLC (Hull) has furnished this map to the company identified in the title block (Client) for its sole and exclusive use as a preliminary planning and screening tool and field verification is necessary to confirm these data. This map is reproduced from geospatial information compiled from third-party sources which may change over time. Areas depicted by the map are approximate and may not be accurate to mapping, surveying or engineering standards. Hull makes no representation or guarantee as to the content, accuracy, timeliness or completeness of any information or spatial location depicted on this map. This map is provided without warranty of any kind, including but not limited to, the implied warranties of merchantability or fitness for a particular purpose. In no event will Hull, its owners, officers, employees or agents, be liable for damages of any kind arising out of the use of this map by Client or any other party.

September 2021  
Dixon Run Solar Project  
SunEnergy1  
**Surface Water Delineation Map**  
Wellston, Mulga, Oak Hill, and Rio Grande Townships  
Jackson County, Ohio

Figure  
**6A**





- Ecological Study Area
- Upland Data Point
- Wetland Data Point
- Stream
- Open Water
- Wetland Cowardin Classification**
- Palustrine Emergent (PEM)
- Palustrine Forested (PFO)
- Palustrine Scrub-Shrub (PSS)



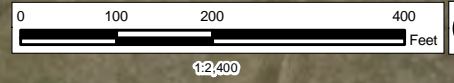
**Note:**  
 The aerial photo was acquired from the Ohio Statewide Imagery Program (OSIP).  
 Aerial photography dated 2020.



**DISCLAIMER**  
 Hull & Associates, LLC (Hull) has furnished this map to the company identified in the title block (Client) for its sole and exclusive use as a preliminary planning and screening tool and field verification is necessary to confirm these data. This map is reproduced from geospatial information compiled from third-party sources which may change over time. Areas depicted by the map are approximate and may not be accurate to mapping, surveying or engineering standards. Hull makes no representation or guarantee as to the content, accuracy, timeliness or completeness of any information or spatial location depicted on this map. This map is provided without warranty of any kind, including but not limited to, the implied warranties of merchantability or fitness for a particular purpose. In no event will Hull, its owners, officers, employees or agents, be liable for damages of any kind arising out of the use of this map by Client or any other party.

September 2021		Figure <b>6B</b>
Dixon Run Solar Project SunEnergy1		
<b>Surface Water Delineation Map</b>		
Wellston, Mulga, Oak Hill, and Rio Grande Townships Jackson County, Ohio		





- Ecological Study Area
- Upland Data Point
- Wetland Data Point
- Stream
- Open Water
- Wetland Cowardin Classification**
- Palustrine Emergent (PEM)
- Palustrine Forested (PFO)
- Palustrine Scrub-Shrub (PSS)






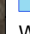



**Note:**  
The aerial photo was acquired from the Ohio Statewide Imagery Program (OSIP).  
Aerial photography dated 2020.

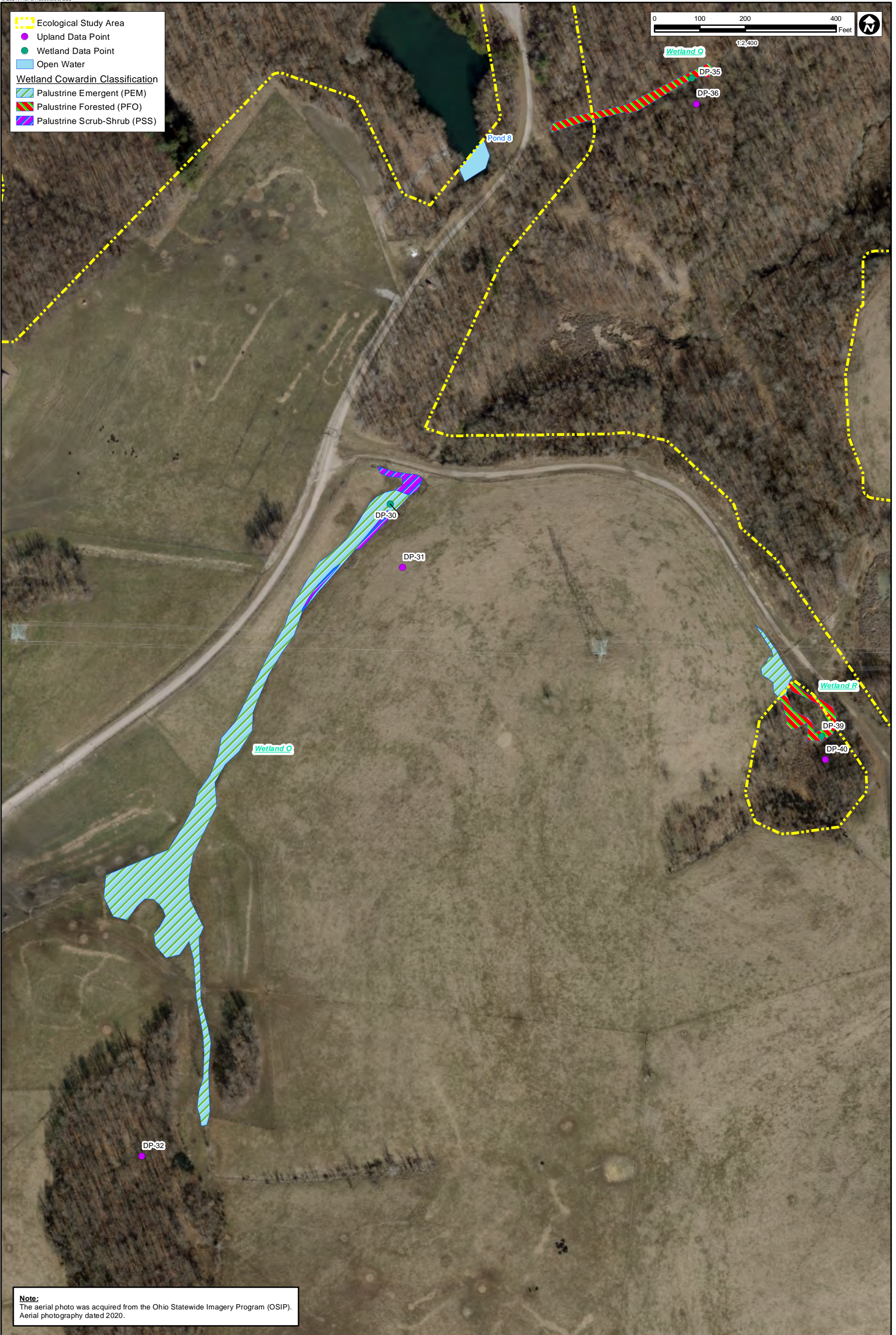
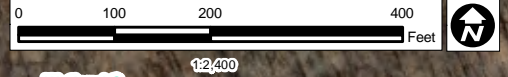


**DISCLAIMER**  
Hull & Associates, LLC (Hull) has furnished this map to the company identified in the title block (Client) for its sole and exclusive use as a preliminary planning and screening tool and field verification is necessary to confirm these data. This map is reproduced from geospatial information compiled from third-party sources which may change over time. Areas depicted by the map are approximate and may not be accurate to mapping, surveying or engineering standards. Hull makes no representation or guarantee as to the content, accuracy, timeliness or completeness of any information or spatial location depicted on this map. This map is provided without warranty of any kind, including but not limited to, the implied warranties of merchantability or fitness for a particular purpose. In no event will Hull, its owners, officers, employees or agents, be liable for damages of any kind arising out of the use of this map by Client or any other party.

September 2021		Figure <b>6C</b>
Dixon Run Solar Project SunEnergy1		
<b>Surface Water Delineation Map</b>		
Wellston, Mulga, Oak Hill, and Rio Grande Townships Jackson County, Ohio		



-  Ecological Study Area
-  Upland Data Point
-  Wetland Data Point
-  Open Water
- Wetland Cowardin Classification**
-  Palustrine Emergent (PEM)
-  Palustrine Forested (PFO)
-  Palustrine Scrub-Shrub (PSS)








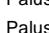
**Note:**  
The aerial photo was acquired from the Ohio Statewide Imagery Program (OSIP).  
Aerial photography dated 2020.

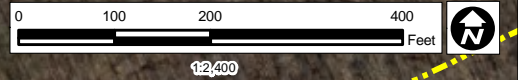


**DISCLAIMER**  
Hull & Associates, LLC (Hull) has furnished this map to the company identified in the title block (Client) for its sole and exclusive use as a preliminary planning and screening tool and field verification is necessary to confirm these data. This map is reproduced from geospatial information compiled from third-party sources which may change over time. Areas depicted by the map are approximate and may not be accurate to mapping, surveying or engineering standards. Hull makes no representation or guarantee as to the content, accuracy, timeliness or completeness of any information or spatial location depicted on this map. This map is provided without warranty of any kind, including but not limited to, the implied warranties of merchantability or fitness for a particular purpose. In no event will Hull, its owners, officers, employees or agents, be liable for damages of any kind arising out of the use of this map by Client or any other party.

September 2021	
Dixon Run Solar Project SunEnergy1	
<b>Surface Water Delineation Map</b>	
Wellston, Mulga, Oak Hill, and Rio Grande Townships Jackson County, Ohio	
Figure <b>6D</b>	



-  Ecological Study Area
  -  Upland Data Point
  -  Wetland Data Point
  -  Stream
  -  Open Water
- Wetland Cowardin Classification**
-  Palustrine Emergent (PEM)
  -  Palustrine Forested (PFO)










**Note:**  
The aerial photo was acquired from the Ohio Statewide Imagery Program (OSIP).  
Aerial photography dated 2020.

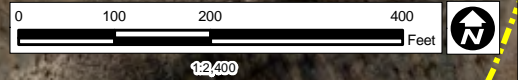


**DISCLAIMER**  
Hull & Associates, LLC (Hull) has furnished this map to the company identified in the title block (Client) for its sole and exclusive use as a preliminary planning and screening tool and field verification is necessary to confirm these data. This map is reproduced from geospatial information compiled from third-party sources which may change over time. Areas depicted by the map are approximate and may not be accurate to mapping, surveying or engineering standards. Hull makes no representation or guarantee as to the content, accuracy, timeliness or completeness of any information or spatial location depicted on this map. This map is provided without warranty of any kind, including but not limited to, the implied warranties of merchantability or fitness for a particular purpose. In no event will Hull, its owners, officers, employees or agents, be liable for damages of any kind arising out of the use of this map by Client or any other party.

September 2021		Figure <b>6E</b>
Dixon Run Solar Project SunEnergy1		
<b>Surface Water Delineation Map</b>		
Wellston, Mulga, Oak Hill, and Rio Grande Townships Jackson County, Ohio		



-  Ecological Study Area
  -  Upland Data Point
  -  Wetland Data Point
  -  Stream
- Wetland Cowardin Classification**
-  Palustrine Emergent (PEM)
  -  Palustrine Forested (PFO)
  -  Palustrine Scrub-Shrub (PSS)



**Note:**  
The aerial photo was acquired from the Ohio Statewide Imagery Program (OSIP).  
Aerial photography dated 2020.

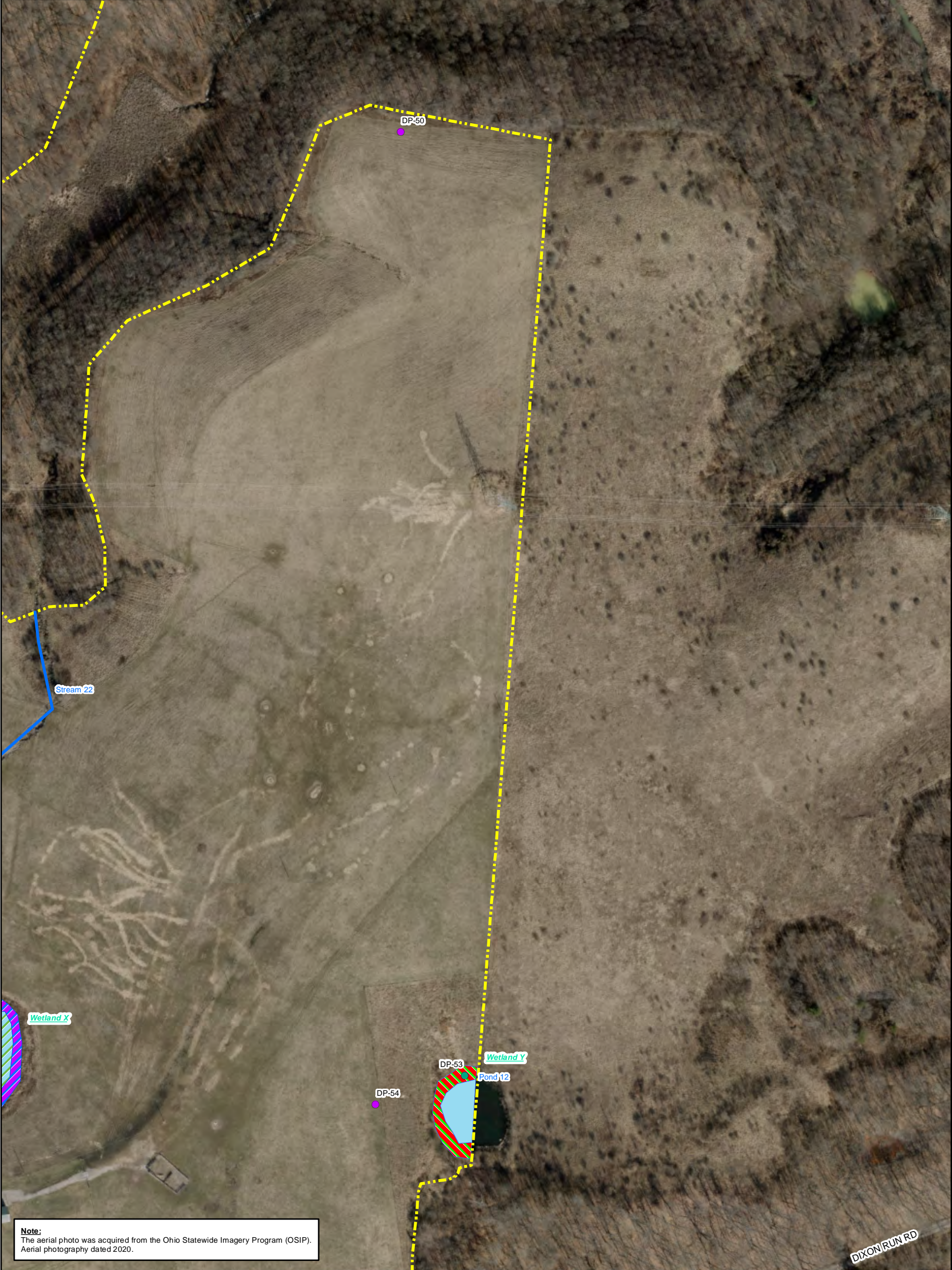


**DISCLAIMER**  
Hull & Associates, LLC (Hull) has furnished this map to the company identified in the title block (Client) for its sole and exclusive use as a preliminary planning and screening tool and field verification is necessary to confirm these data. This map is reproduced from geospatial information compiled from third-party sources which may change over time. Areas depicted by the map are approximate and may not be accurate to mapping, surveying or engineering standards. Hull makes no representation or guarantee as to the content, accuracy, timeliness or completeness of any information or spatial location depicted on this map. This map is provided without warranty of any kind, including but not limited to, the implied warranties of merchantability or fitness for a particular purpose. In no event will Hull, its owners, officers, employees or agents, be liable for damages of any kind arising out of the use of this map by Client or any other party.

September 2021		Figure <b>6F</b>
Dixon Run Solar Project SunEnergy1		
<b>Surface Water Delineation Map</b>		
Wellston, Mulga, Oak Hill, and Rio Grande Townships Jackson County, Ohio		



- Ecological Study Area
  - Upland Data Point
  - Wetland Data Point
  - Stream
  - Open Water
- Wetland Cowardin Classification**
- Palustrine Emergent (PEM)
  - Palustrine Forested (PFO)
  - Palustrine Scrub-Shrub (PSS)



**Note:**  
The aerial photo was acquired from the Ohio Statewide Imagery Program (OSIP).  
Aerial photography dated 2020.

DIXON RUN RD








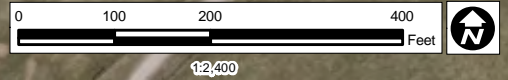
**DISCLAIMER**  
Hull & Associates, LLC (Hull) has furnished this map to the company identified in the title block (Client) for its sole and exclusive use as a preliminary planning and screening tool and field verification is necessary to confirm these data. This map is reproduced from geospatial information compiled from third-party sources which may change over time. Areas depicted by the map are approximate and may not be accurate to mapping, surveying or engineering standards. Hull makes no representation or guarantee as to the content, accuracy, timeliness or completeness of any information or spatial location depicted on this map. This map is provided without warranty of any kind, including but not limited to, the implied warranties of merchantability or fitness for a particular purpose. In no event will Hull, its owners, officers, employees or agents, be liable for damages of any kind arising out of the use of this map by Client or any other party.

September 2021  
Dixon Run Solar Project  
SunEnergy1  
**Surface Water Delineation Map**  
Wellston, Mulga, Oak Hill, and Rio Grande Townships  
Jackson County, Ohio

Figure  
**6G**



-  Ecological Study Area
  -  Upland Data Point
  -  Wetland Data Point
  -  Stream
- Wetland Cowardin Classification**
-  Palustrine Emergent (PEM)







**Note:**  
The aerial photo was acquired from the Ohio Statewide Imagery Program (OSIP).  
Aerial photography dated 2020.

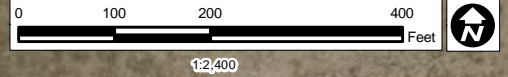


**DISCLAIMER**  
Hull & Associates, LLC (Hull) has furnished this map to the company identified in the title block (Client) for its sole and exclusive use as a preliminary planning and screening tool and field verification is necessary to confirm these data. This map is reproduced from geospatial information compiled from third-party sources which may change over time. Areas depicted by the map are approximate and may not be accurate to mapping, surveying or engineering standards. Hull makes no representation or guarantee as to the content, accuracy, timeliness or completeness of any information or spatial location depicted on this map. This map is provided without warranty of any kind, including but not limited to, the implied warranties of merchantability or fitness for a particular purpose. In no event will Hull, its owners, officers, employees or agents, be liable for damages of any kind arising out of the use of this map by Client or any other party.

September 2021		Figure <b>6H</b>
Dixon Run Solar Project SunEnergy1		
<b>Surface Water Delineation Map</b>		
Wellston, Mulga, Oak Hill, and Rio Grande Townships Jackson County, Ohio		



-  Ecological Study Area
-  Upland Data Point
-  Open Water
- Wetland Cowardin Classification**
-  Palustrine Emergent (PEM)



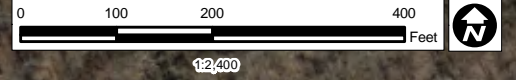
**Note:**  
The aerial photo was acquired from the Ohio Statewide Imagery Program (OSIP).  
Aerial photography dated 2020.



**DISCLAIMER**  
Hull & Associates, LLC (Hull) has furnished this map to the company identified in the title block (Client) for its sole and exclusive use as a preliminary planning and screening tool and field verification is necessary to confirm these data. This map is reproduced from geospatial information compiled from third-party sources which may change over time. Areas depicted by the map are approximate and may not be accurate to mapping, surveying or engineering standards. Hull makes no representation or guarantee as to the content, accuracy, timeliness or completeness of any information or spatial location depicted on this map. This map is provided without warranty of any kind, including but not limited to, the implied warranties of merchantability or fitness for a particular purpose. In no event will Hull, its owners, officers, employees or agents, be liable for damages of any kind arising out of the use of this map by Client or any other party.

September 2021	
Dixon Run Solar Project SunEnergy1	
<b>Surface Water Delineation Map</b>	
Wellston, Mulga, Oak Hill, and Rio Grande Townships Jackson County, Ohio	
Figure <b>61</b>	





- Ecological Study Area
- Upland Data Point
- Wetland Data Point
- Open Water
- Wetland Cowardin Classification**
- Palustrine Emergent (PEM)
- Palustrine Forested (PFO)



**Note:**  
The aerial photo was acquired from the Ohio Statewide Imagery Program (OSIP).  
Aerial photography dated 2020.



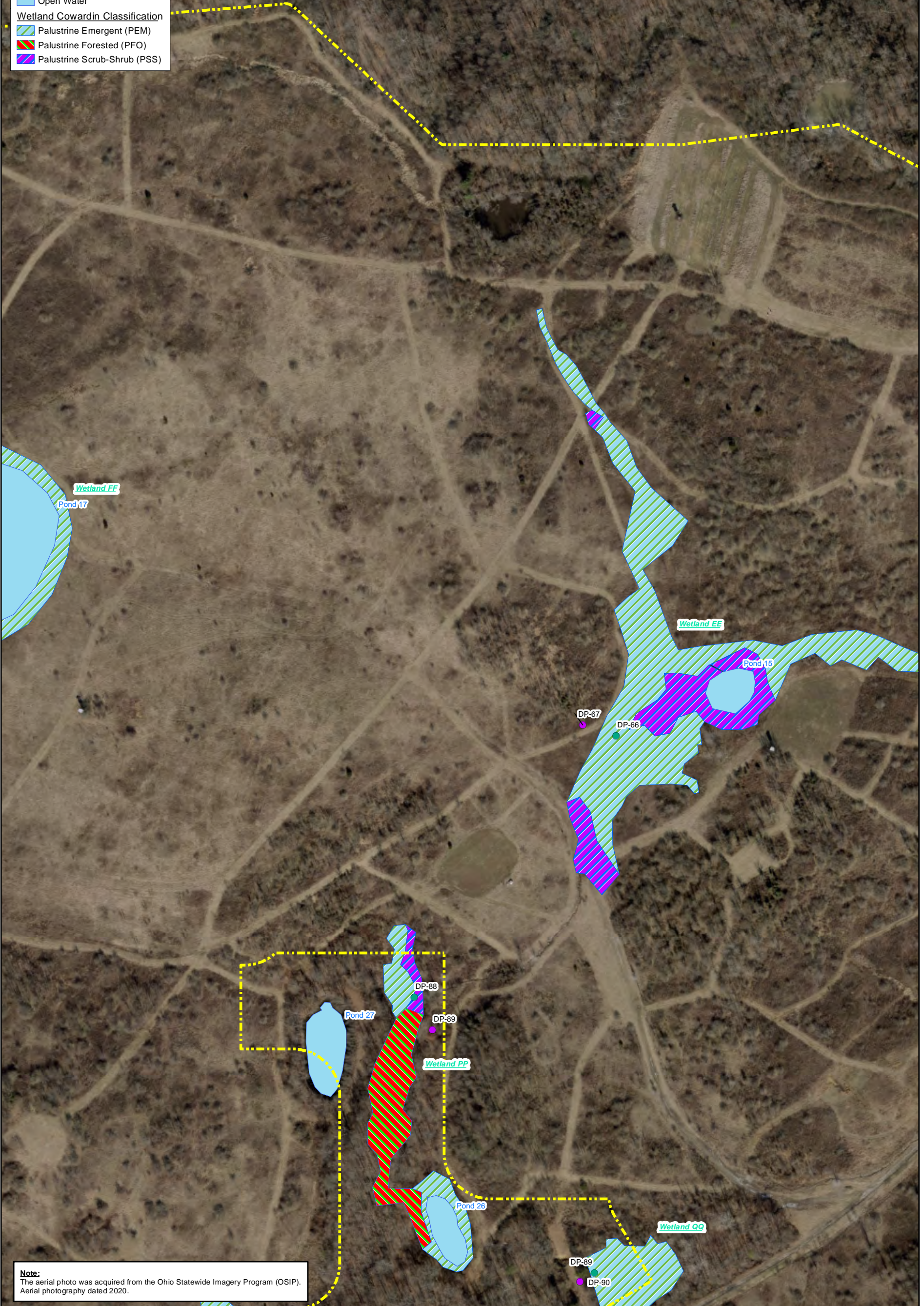
**DISCLAIMER**  
Hull & Associates, LLC (Hull) has furnished this map to the company identified in the title block (Client) for its sole and exclusive use as a preliminary planning and screening tool and field verification is necessary to confirm these data. This map is reproduced from geospatial information compiled from third-party sources which may change over time. Areas depicted by the map are approximate and may not be accurate to mapping, surveying or engineering standards. Hull makes no representation or guarantee as to the content, accuracy, timeliness or completeness of any information or spatial location depicted on this map. This map is provided without warranty of any kind, including but not limited to, the implied warranties of merchantability or fitness for a particular purpose. In no event will Hull, its owners, officers, employees or agents, be liable for damages of any kind arising out of the use of this map by Client or any other party.

September 2021		Figure <b>6J</b>
Dixon Run Solar Project SunEnergy1		
<b>Surface Water Delineation Map</b>		
Wellston, Mulga, Oak Hill, and Rio Grande Townships Jackson County, Ohio		





- Ecological Study Area
  - Upland Data Point
  - Wetland Data Point
  - Open Water
- Wetland Cowardin Classification**
- Palustrine Emergent (PEM)
  - Palustrine Forested (PFO)
  - Palustrine Scrub-Shrub (PSS)



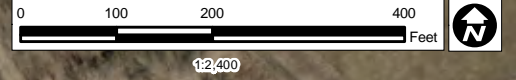
**Note:**  
The aerial photo was acquired from the Ohio Statewide Imagery Program (OSIP).  
Aerial photography dated 2020.











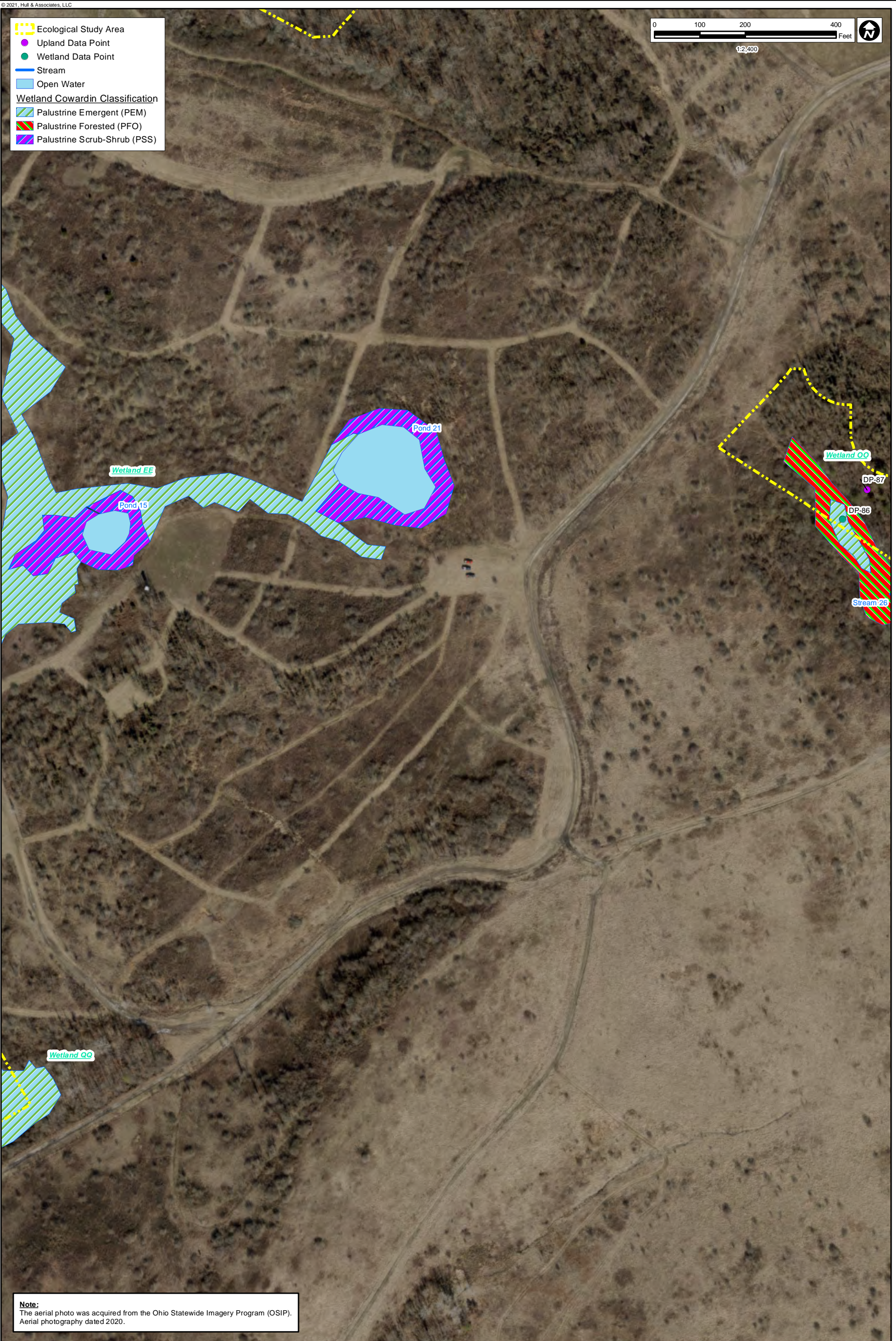
**DISCLAIMER**  
Hull & Associates, LLC (Hull) has furnished this map to the company identified in the title block (Client) for its sole and exclusive use as a preliminary planning and screening tool and field verification is necessary to confirm these data. This map is reproduced from geospatial information compiled from third-party sources which may change over time. Areas depicted by the map are approximate and may not be accurate to mapping, surveying or engineering standards. Hull makes no representation or guarantee as to the content, accuracy, timeliness or completeness of any information or spatial location depicted on this map. This map is provided without warranty of any kind, including but not limited to, the implied warranties of merchantability or fitness for a particular purpose. In no event will Hull, its owners, officers, employees or agents, be liable for damages of any kind arising out of the use of this map by Client or any other party.

September 2021		Figure <b>6K</b>
Dixon Run Solar Project SunEnergy1		
<b>Surface Water Delineation Map</b>		
Wellston, Mulga, Oak Hill, and Rio Grande Townships Jackson County, Ohio		





-  Ecological Study Area
  -  Upland Data Point
  -  Wetland Data Point
  -  Stream
  -  Open Water
- Wetland Cowardin Classification**
-  Palustrine Emergent (PEM)
  -  Palustrine Forested (PFO)
  -  Palustrine Scrub-Shrub (PSS)



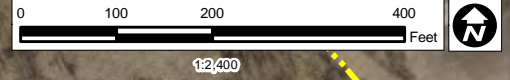
**Note:**  
 The aerial photo was acquired from the Ohio Statewide Imagery Program (OSIP).  
 Aerial photography dated 2020.



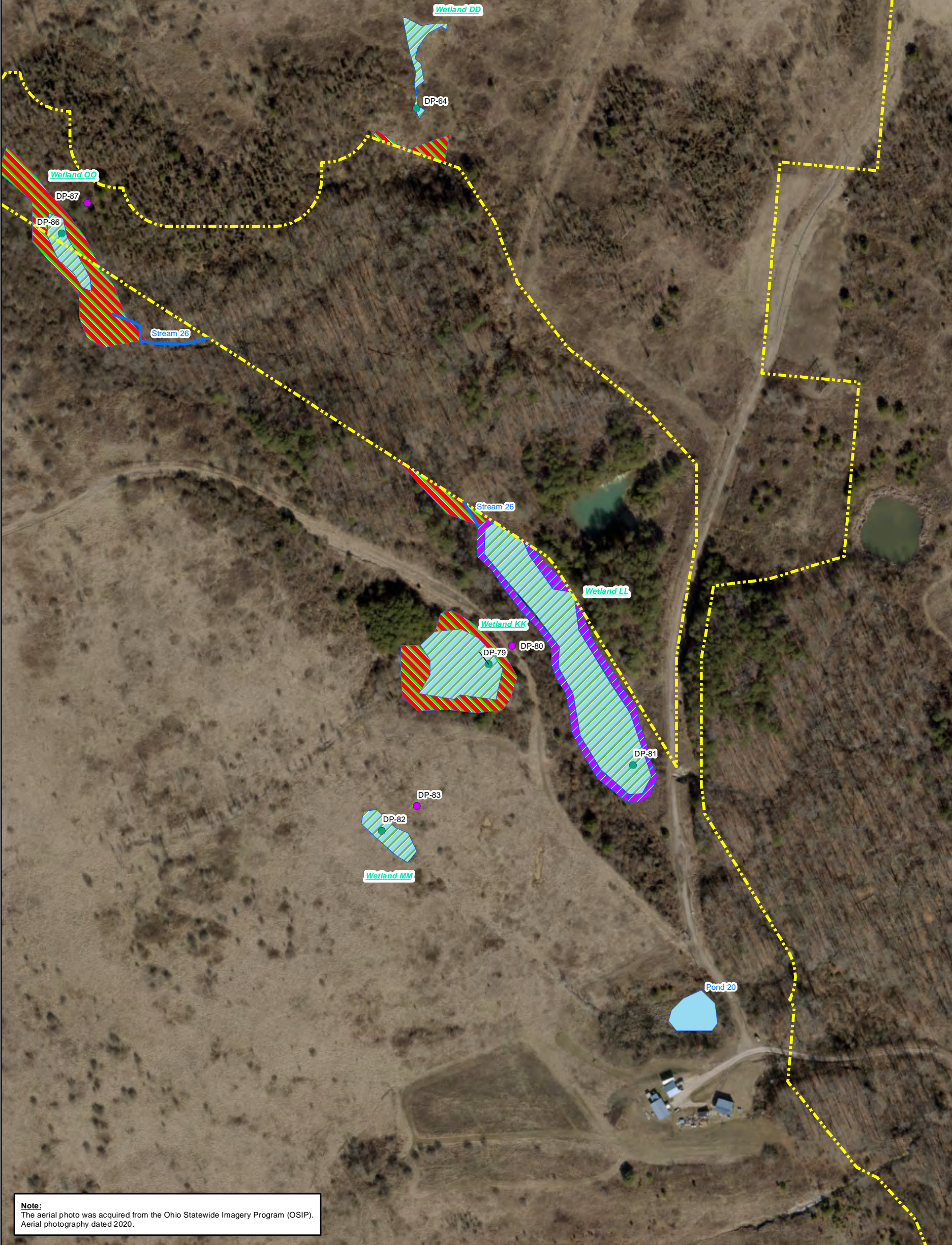
**DISCLAIMER**  
 Hull & Associates, LLC (Hull) has furnished this map to the company identified in the title block (Client) for its sole and exclusive use as a preliminary planning and screening tool and field verification is necessary to confirm these data. This map is reproduced from geospatial information compiled from third-party sources which may change over time. Areas depicted by the map are approximate and may not be accurate to mapping, surveying or engineering standards. Hull makes no representation or guarantee as to the content, accuracy, timeliness or completeness of any information or spatial location depicted on this map. This map is provided without warranty of any kind, including but not limited to, the implied warranties of merchantability or fitness for a particular purpose. In no event will Hull, its owners, officers, employees or agents, be liable for damages of any kind arising out of the use of this map by Client or any other party.

September 2021	
Dixon Run Solar Project SunEnergy1	
<b>Surface Water Delineation Map</b>	
Wellston, Mulga, Oak Hill, and Rio Grande Townships Jackson County, Ohio	
Figure <b>6L</b>	





- Ecological Study Area
  - Upland Data Point
  - Wetland Data Point
  - Stream
  - Open Water
- Wetland Cowardin Classification**
- Palustrine Emergent (PEM)
  - Palustrine Forested (PFO)
  - Palustrine Scrub-Shrub (PSS)






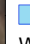




**Note:**  
The aerial photo was acquired from the Ohio Statewide Imagery Program (OSIP).  
Aerial photography dated 2020.

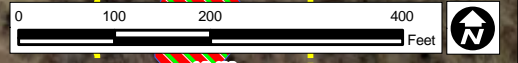


**DISCLAIMER**  
Hull & Associates, LLC (Hull) has furnished this map to the company identified in the title block (Client) for its sole and exclusive use as a preliminary planning and screening tool and field verification is necessary to confirm these data. This map is reproduced from geospatial information compiled from third-party sources which may change over time. Areas depicted by the map are approximate and may not be accurate to mapping, surveying or engineering standards. Hull makes no representation or guarantee as to the content, accuracy, timeliness or completeness of any information or spatial location depicted on this map. This map is provided without warranty of any kind, including but not limited to, the implied warranties of merchantability or fitness for a particular purpose. In no event will Hull, its owners, officers, employees or agents, be liable for damages of any kind arising out of the use of this map by Client or any other party.

September 2021		Figure <b>6M</b>
Dixon Run Solar Project SunEnergy1		
<b>Surface Water Delineation Map</b>		
Wellston, Mulga, Oak Hill, and Rio Grande Townships Jackson County, Ohio		



-  Ecological Study Area
-  Upland Data Point
-  Wetland Data Point
-  Stream
-  Open Water
- Wetland Cowardin Classification**
-  Palustrine Emergent (PEM)
-  Palustrine Forested (PFO)
-  Palustrine Scrub-Shrub (PSS)











**Note:**  
The aerial photo was acquired from the Ohio Statewide Imagery Program (OSIP).  
Aerial photography dated 2020.

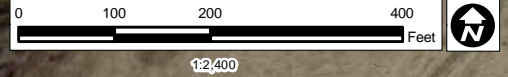


**DISCLAIMER**  
Hull & Associates, LLC (Hull) has furnished this map to the company identified in the title block (Client) for its sole and exclusive use as a preliminary planning and screening tool and field verification is necessary to confirm these data. This map is reproduced from geospatial information compiled from third-party sources which may change over time. Areas depicted by the map are approximate and may not be accurate to mapping, surveying or engineering standards. Hull makes no representation or guarantee as to the content, accuracy, timeliness or completeness of any information or spatial location depicted on this map. This map is provided without warranty of any kind, including but not limited to, the implied warranties of merchantability or fitness for a particular purpose. In no event will Hull, its owners, officers, employees or agents, be liable for damages of any kind arising out of the use of this map by Client or any other party.

September 2021		Figure <b>6N</b>
Dixon Run Solar Project SunEnergy1		
<b>Surface Water Delineation Map</b>		
Wellston, Mulga, Oak Hill, and Rio Grande Townships Jackson County, Ohio		



-  Ecological Study Area
  -  Upland Data Point
  -  Wetland Data Point
  -  Stream
  -  Open Water
- Wetland Cowardin Classification**
-  Palustrine Emergent (PEM)
  -  Palustrine Forested (PFO)
  -  Palustrine Scrub-Shrub (PSS)



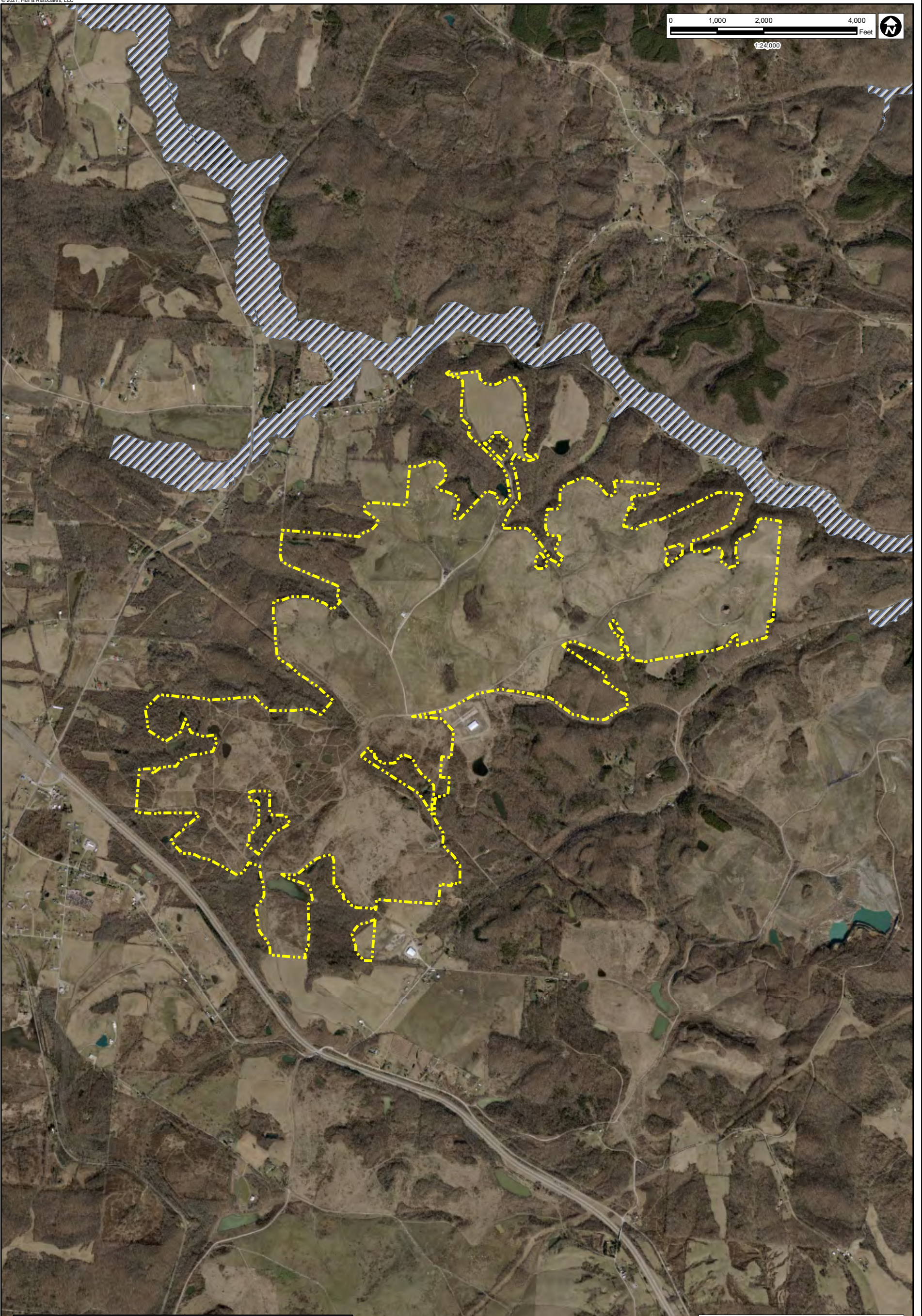
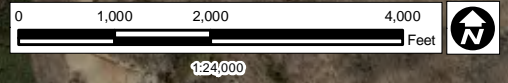
**Note:**  
The aerial photo was acquired from the Ohio Statewide Imagery Program (OSIP).  
Aerial photography dated 2020.





**DISCLAIMER**  
Hull & Associates, LLC (Hull) has furnished this map to the company identified in the title block (Client) for its sole and exclusive use as a preliminary planning and screening tool and field verification is necessary to confirm these data. This map is reproduced from geospatial information compiled from third-party sources which may change over time. Areas depicted by the map are approximate and may not be accurate to mapping, surveying or engineering standards. Hull makes no representation or guarantee as to the content, accuracy, timeliness or completeness of any information or spatial location depicted on this map. This map is provided without warranty of any kind, including but not limited to, the implied warranties of merchantability or fitness for a particular purpose. In no event will Hull, its owners, officers, employees or agents, be liable for damages of any kind arising out of the use of this map by Client or any other party.

September 2021		Figure <b>60</b>
Dixon Run Solar Project SunEnergy1		
<b>Surface Water Delineation Map</b>		
Wellston, Mulga, Oak Hill, and Rio Grande Townships Jackson County, Ohio		





**Note:**  
The aerial photo was acquired from the Ohio Statewide Imagery Program (OSIP).  
Aerial photography dated 2020.

 Ecological Study Area  
 100-Year Floodplain (FEMA)

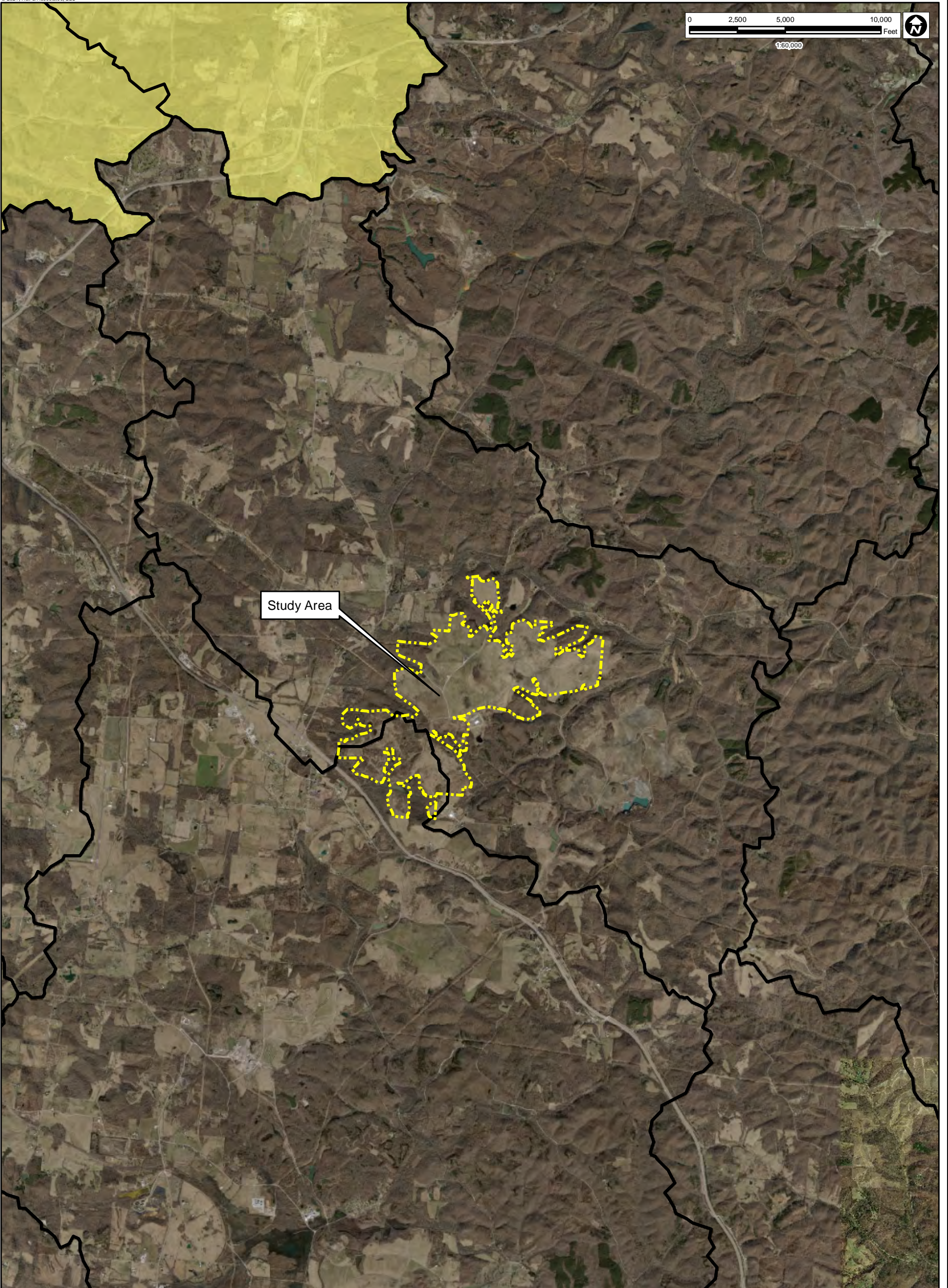
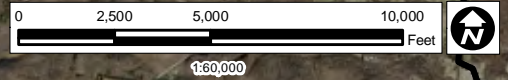
**HULL**  
Environment / Energy / Infrastructure

**DISCLAIMER**  
Hull & Associates, LLC (Hull) has furnished this map to the company identified in the title block (Client) for its sole and exclusive use as a preliminary planning and screening tool and field verification is necessary to confirm these data. This map is reproduced from geospatial information compiled from third-party sources which may change over time. Areas depicted by the map are approximate and may not be accurate to mapping, surveying or engineering standards. Hull makes no representation or guarantee as to the content, accuracy, timeliness or completeness of any information or spatial location depicted on this map. This map is provided without warranty of any kind, including but not limited to, the implied warranties of merchantability or fitness for a particular purpose. In no event will Hull, its owners, officers, employees or agents, be liable for damages of any kind arising out of the use of this map by Client or any other party.


September 2021  
Dixon Run Solar Project  
SunEnergy1  
**FEMA 100-Year Floodplain  
Map**  
Wellston, Mulga, Oak Hill, and Rio Grande Townships  
Jackson County, Ohio

Figure  
**7**







Study Area

 Ecological Study Area

Ohio EPA 401 Water Quality Certification for Nationwide Permits

**Eligibility**

 Eligible

 Possibly Eligible

**Note:**  
The aerial photo was acquired from the Ohio Statewide Imagery Program (OSIP).  
Aerial photography dated 2020.



**DISCLAIMER**  
Hull & Associates, LLC (Hull) has furnished this map to the company identified in the title block (Client) for its sole and exclusive use as a preliminary planning and screening tool and field verification is necessary to confirm these data. This map is reproduced from geospatial information compiled from third-party sources which may change over time. Areas depicted by the map are approximate and may not be accurate to mapping, surveying or engineering standards. Hull makes no representation or guarantee as to the content, accuracy, timeliness or completeness of any information or spatial location depicted on this map. This map is provided without warranty of any kind, including but not limited to, the implied warranties of merchantability or fitness for a particular purpose. In no event will Hull, its owners, officers, employees or agents, be liable for damages of any kind arising out of the use of this map by Client or any other party.

September 2021		Figure <b>8</b>
Dixon Run Solar Project SunEnergy1		
<b>NWP Stream Eligibility Map</b>		
Wellston, Mulga, Oak Hill, and Rio Grande Townships Jackson County, Ohio		