

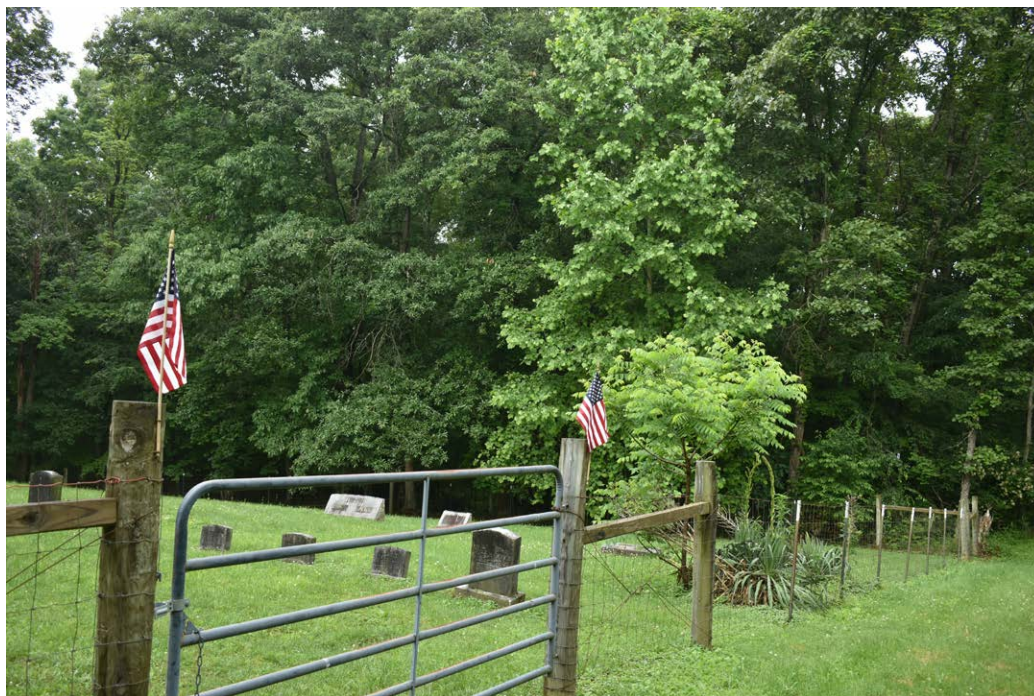
Dixon Run Solar

Bloomfield Township, Jackson County, Ohio

Visual Resource Assessment

- Viewpoint
- Simulated Viewpoint
- Fenceline
- Access Road
- ▭ Project Area
- ▭ Collection Substation
- ▭ POI Substation
- ▭ PV Panel Area
- ▭ 2-Mile Study Area
- ▭ Township Boundary
- ▭ County Boundary





Viewpoint 1

View looking west-southwest from Dixon Run Cemetery Rd in the Township of Bloomfield, Jackson County, Ohio

Landscape Similarity Zone:
Forest

User Group:
Local Residents, Tourists/Recreational Users

Visually Sensitive Resource(s):
Dixon Run Cemetery, Ohio's Hill Country Heritage Area

Coordinates:
38.99140° N, 82.49575° W

Distance to Project:
0.35 mile

Elevation:
758.7 feet



Viewpoint 2

View looking east-northeast from Luther Jones Rd in the Township of Bloomfield, Jackson County, Ohio

Landscape Similarity Zone:
Cropland/Pasture

User Group:
Local Residents

Visually Sensitive Resource(s):
Ohio's Hill Country Heritage Area

Coordinates:
38.99590° N, 82.51379° W

Distance to Project:
169.3 feet

Elevation:
858.5 feet

Dixon Run Solar

Bloomfield Township, Jackson County, Ohio

Visual Resource Assessment



Viewpoint 3

View looking south from Luther Jones Rd in the Township of Bloomfield, Jackson County, Ohio

Landscape Similarity Zone:
Forest

User Group:
Local Residents

Visually Sensitive Resource(s):
Ohio's Hill Country Heritage Area

Coordinates:
39.00472° N, 82.52246° W

Distance to Project:
76.2 feet

Elevation:
738.6 feet



Viewpoint 4

View looking southwest from Keystone Furnace Rd in the Township of Bloomfield, Jackson County, Ohio

Landscape Similarity Zone:
Developed

User Group:
Local Residents

Visually Sensitive Resource(s):
Ohio's Hill Country Heritage Area

Coordinates:
39.01109° N, 82.48938° W

Distance to Project:
769.2 feet

Elevation:
639.7 feet

Dixon Run Solar

Bloomfield Township, Jackson County, Ohio

Visual Resource Assessment



Viewpoint 5

View looking southwest from Dixon Run Rd in the Township of Bloomfield, Jackson County, Ohio

Landscape Similarity Zone:
Forest

User Group:
Local Residents

Visually Sensitive Resource(s):
Ohio's Hill Country Heritage Area

Coordinates:
38.99937° N, 82.48821° W

Distance to Project:
318.2 feet

Elevation:
656.7 feet



Viewpoint 6

View looking west-northwest from Dixon Run Rd in the Township of Bloomfield, Jackson County, Ohio

Landscape Similarity Zone:
Forest

User Group:
Local Residents

Visually Sensitive Resource(s):
Ohio's Hill Country Heritage Area

Coordinates:
38.98742° N, 82.50341° W

Distance to Project:
0.35 mile

Elevation:
687.9 feet

Dixon Run Solar

Bloomfield Township, Jackson County, Ohio

Visual Resource Assessment



Viewpoint 7

View looking north-northeast from Dixon Run Rd in the Township of Bloomfield, Jackson County, Ohio

Landscape Similarity Zone:
Cropland/Pasture

User Group:
Local Residents

Visually Sensitive Resource(s):
Ohio's Hill Country Heritage Area

Coordinates:
38.97843° N, 82.51502° W

Distance to Project:
0.43 mile

Elevation:
758.6 feet



Viewpoint 8

View looking north from Dixon Run Rd in the Township of Bloomfield, Jackson County, Ohio

Landscape Similarity Zone:
Developed

User Group:
Local Residents

Visually Sensitive Resource(s):
Ohio's Hill Country Heritage Area

Coordinates:
38.98114° N, 82.51220° W

Distance to Project:
0.26 mile

Elevation:
746.6 feet

Dixon Run Solar

Bloomfield Township, Jackson County, Ohio

Visual Resource Assessment



Viewpoint 9

View looking north-northwest from Us Highway 35 in the Township of Bloomfield, Jackson County, Ohio

Landscape Similarity Zone:
Developed

User Group:
Local Residents, Through-Travelers

Visually Sensitive Resource(s):
US Hwy 35, Welsh Scenic Byway, Ohio's Hill Country Heritage Area

Coordinates:
38.98284° N, 82.52742° W

Distance to Project:
956.8 feet

Elevation:
759.6 feet



Viewpoint 10

View looking east-northeast from Luther Jones Rd in the Township of Bloomfield, Jackson County, Ohio

Landscape Similarity Zone:
Cropland/Pasture

User Group:
Local Residents

Visually Sensitive Resource(s):
Ohio's Hill Country Heritage Area

Coordinates:
39.00078° N, 82.51666° W

Distance to Project:
108.2 feet

Elevation:
803.3 feet

Dixon Run Solar

Bloomfield Township, Jackson County, Ohio

Visual Resource Assessment



Viewpoint 11

View looking west from Luther Jones Rd in the Township of Bloomfield, Jackson County, Ohio

Landscape Similarity Zone:
Cropland/Pasture

User Group:
Local Residents

Visually Sensitive Resource(s):
Ohio's Hill Country Heritage Area

Coordinates:
38.99687° N, 82.51406° W

Distance to Project:
97.8 feet

Elevation:
870.7 feet



Viewpoint 12

View looking north-northeast from Vega Rd in the Township of Bloomfield, Jackson County, Ohio

Landscape Similarity Zone:
Cropland/Pasture

User Group:
Local Residents, Tourists/Recreational Users

Visually Sensitive Resource(s):
Vega Cemetery, Vega, Ohio's Hill Country Heritage Area

Coordinates:
38.95809° N, 82.49734° W

Distance to Project:
2.01 miles

Elevation:
902.3 feet

Dixon Run Solar

Bloomfield Township, Jackson County, Ohio

Visual Resource Assessment



Viewpoint 13

View looking south from Pattonsville Rd in the Township of Bloomfield, Jackson County, Ohio

Landscape Similarity Zone:
Forest

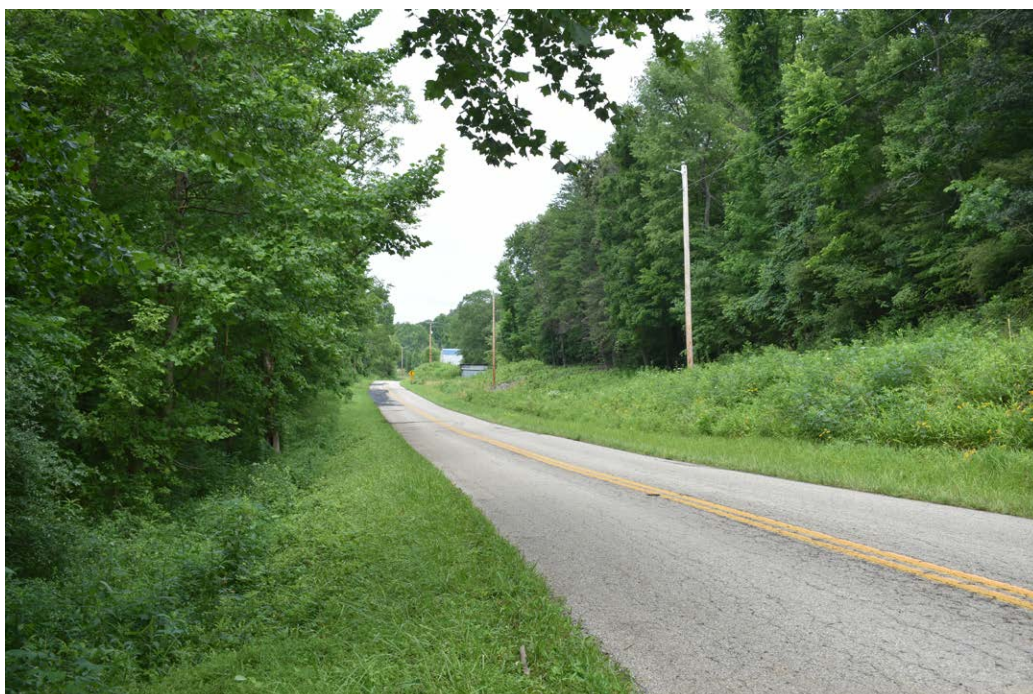
User Group:
Local Residents, Tourists/recreational Users

Visually Sensitive Resource(s):
Andrews Cemetery, Ohio's Hill Country Heritage Area

Coordinates:
39.01907° N, 82.47743° W

Distance to Project:
0.92 mile

Elevation:
885.1 feet



Viewpoint 14

View looking west-northwest from Keystone Furnace Rd in the Township of Bloomfield, Jackson County, Ohio

Landscape Similarity Zone:
Forest

User Group:
Local Residents

Visually Sensitive Resource(s):
Ohio's Hill Country Heritage Area

Coordinates:
39.00699° N, 82.47870° W

Distance to Project:
0.44 mile

Elevation:
646.2 feet

Dixon Run Solar

Bloomfield Township, Jackson County, Ohio

Visual Resource Assessment

Viewpoint 15

View looking south from Keystone Furnace Rd in the Township of Bloomfield, Jackson County, Ohio



Landscape Similarity Zone:
Developed

User Group:
Local Residents

Visually Sensitive Resource(s):
Ridgeland, Ohio's Hill Country Heritage Area

Coordinates:
39.01406° N, 82.51970° W

Distance to Project:
0.45 mile

Elevation:
669.2 feet

Viewpoint 16

View looking southwest from Union Cemetary Rd in the Township of Bloomfield, Jackson County, Ohio



Landscape Similarity Zone:
Forest

User Group:
Local Residents, Tourists/Recreational Users

Visually Sensitive Resource(s):
Union Cemetery, Bloomfield Township, Ohio's Hill Country Heritage Area

Coordinates:
39.01939° N, 82.53254° W

Distance to Project:
1.03 miles

Elevation:
795.0 feet

Dixon Run Solar

Bloomfield Township, Jackson County, Ohio

Visual Resource Assessment



Viewpoint 17

View looking south-southeast from SR-327 in the Township of Bloomfield, Jackson County, Ohio

Landscape Similarity Zone:
Developed

User Group:
Local Residents, Through-Travelers

Visually Sensitive Resource(s):
State Rte 327, Ohio's Hill Country Heritage Area

Coordinates:
39.02264° N, 82.52818° W

Distance to Project:
1.12 miles

Elevation:
694.0 feet

Viewpoint selected for the Production of a Visual Simulation



Viewpoint 18

View looking south from SR-327 in the Township of Milton, Jackson County, Ohio

Landscape Similarity Zone:
Developed

User Group:
Local Residents, Through-Travelers

Visually Sensitive Resource(s):
State Rte 327, Ohio's Hill Country Heritage Area

Coordinates:
39.04886° N, 82.53934° W

Distance to Project:
2.84 miles

Elevation:
727.2 feet

Dixon Run Solar

Bloomfield Township, Jackson County, Ohio

Visual Resource Assessment



Viewpoint 19

View looking southeast from Keystone Furnace Rd in the Township of Bloomfield, Jackson County, Ohio

Landscape Similarity Zone:
Cropland/Pasture

User Group:
Local Residents

Visually Sensitive Resource(s):
Ohio's Hill Country Heritage Area

Coordinates:
39.01431° N, 82.53010° W

Distance to Project:
0.66 mile

Elevation:
696.1 feet



Viewpoint 20

View looking east from SR-327 in the Township of Bloomfield, Jackson County, Ohio

Landscape Similarity Zone:
Developed

User Group:
Local Residents, Through-Travelers

Visually Sensitive Resource(s):
State Rte 327, US Hwy 35, Welsh Scenic Byway, Ohio's Hill Country Heritage Area

Coordinates:
38.99478° N, 82.53994° W

Distance to Project:
0.40 mile

Elevation:
696.9 feet

Dixon Run Solar

Bloomfield Township, Jackson County, Ohio

Visual Resource Assessment



Viewpoint 21

View looking east from Dixon Run Rd in the Township of Bloomfield, Jackson County, Ohio

Landscape Similarity Zone:
Developed

User Group:
Local Residents, Through-Travelers, Tourists/Recreational Users

Visually Sensitive Resource(s):
Symmes Creek, US Hwy 35, Welsh Scenic Byway, Ohio's Hill Country Heritage Area

Coordinates:
38.99661° N, 82.55218° W

Distance to Project:
1.07 miles

Elevation:
736.0 feet



Viewpoint 22

View looking east-northeast from Winchester Cemetary Rd in the Township of Bloomfield, Jackson County, Ohio

Landscape Similarity Zone:
Forest

User Group:
Local Residents, Through-Travelers, Tourists/Recreational Users

Visually Sensitive Resource(s):
Winchester Cemetery, Rocky Hill, Winchester, US Hwy 35, Welsh Scenic Byway, Ohio's Hill Country Heritage Area

Coordinates:
38.98984° N, 82.53922° W

Distance to Project:
0.33 mile

Elevation:
768.0 feet

Viewpoint selected for the Production of a Visual Simulation

Dixon Run Solar

Bloomfield Township, Jackson County, Ohio

Visual Resource Assessment

Viewpoint 23

View looking northwest from Dixon Run Rd in the Township of Bloomfield, Jackson County, Ohio



Landscape Similarity Zone:
Cropland/Pasture

User Group:
Local Residents, Through-Travelers,
Tourists/Recreational Users

Visually Sensitive Resource(s):
US Hwy 35, Welsh Scenic Byway,
Ohio's Hill Country Heritage Area

Coordinates:
38.98152° N, 82.53105° W

Distance to Project:
0.39 mile

Elevation:
725.8 feet

Viewpoint 24

View looking west-southwest from Luther Jones Rd in the Township of Bloomfield, Jackson County, Ohio



Landscape Similarity Zone:
Forest

User Group:
Local Residents

Visually Sensitive Resource(s):
Ohio's Hill Country Heritage Area

Coordinates:
38.99667° N, 82.49490° W

Distance to Project:
679.9 feet

Elevation:
671.2 feet

Dixon Run Solar

Bloomfield Township, Jackson County, Ohio

Visual Resource Assessment



Viewpoint 25

View looking northeast from Luther Jones Rd in the Township of Bloomfield, Jackson County, Ohio

Landscape Similarity Zone:
Forest

User Group:
Local Residents

Visually Sensitive Resource(s):
Ohio's Hill Country Heritage Area

Coordinates:
38.99718° N, 82.50608° W

Distance to Project:
110.8 feet

Elevation:
765.0 feet



Viewpoint 26

View looking east-northeast from Luther Jones Rd in the Township of Bloomfield, Jackson County, Ohio

Landscape Similarity Zone:
Cropland/Pasture

User Group:
Local Residents

Visually Sensitive Resource(s):
Ohio's Hill Country Heritage Area

Coordinates:
38.99744° N, 82.50806° W

Distance to Project:
85.9 feet

Elevation:
810.0 feet

Viewpoint selected for the Production of a Visual Simulation

Dixon Run Solar

Bloomfield Township, Jackson County, Ohio

Visual Resource Assessment



Viewpoint 27

View looking north-northeast from Luther Jones Rd in the Township of Bloomfield, Jackson County, Ohio

Landscape Similarity Zone:
Cropland/Pasture

User Group:
Local Residents

Visually Sensitive Resource(s):
Ohio's Hill Country Heritage Area

Coordinates:
38.99621° N, 82.51163° W

Distance to Project:
130.1 feet

Elevation:
854.1 feet



Viewpoint 28

View looking north-northeast from Luther Jones Rd in the Township of Bloomfield, Jackson County, Ohio

Landscape Similarity Zone:
Cropland/Pasture

User Group:
Local Residents

Visually Sensitive Resource(s):
Ohio's Hill Country Heritage Area

Coordinates:
38.99740° N, 82.51409° W

Distance to Project:
111.4 feet

Elevation:
877.0 feet

Viewpoint selected for the Production of a Visual Simulation

Dixon Run Solar

Bloomfield Township, Jackson County, Ohio

Visual Resource Assessment

Viewpoint 29

View looking north from Luther Jones Rd in the Township of Bloomfield, Jackson County, Ohio



Landscape Similarity Zone:
Cropland/Pasture

User Group:
Local Resident

Visually Sensitive Resource(s):
Ohio's Hill Country Heritage Area

Coordinates:
38.99919° N, 82.51495° W

Distance to Project:
112.8 feet

Elevation:
834.4 feet

Viewpoint 30

View looking southeast from Luther Jones Rd in the Township of Bloomfield, Jackson County, Ohio



Landscape Similarity Zone:
Forest

User Group:
Local Residents

Visually Sensitive Resource(s):
Ohio's Hill Country Heritage Area

Coordinates:
39.00644° N, 82.52337° W

Distance to Project:
106.6 feet

Elevation:
781.3 feet

Dixon Run Solar

Bloomfield Township, Jackson County, Ohio

Visual Resource Assessment



Viewpoint 31

View looking east-southeast from US Highway 35 in the Township of Bloomfield, Jackson County, Ohio

Landscape Similarity Zone:
Developed

User Group:
Local Residents, Through-Travelers, Tourists/Recreational Users

Visually Sensitive Resource(s):
US Hwy 35, Welsh Scenic Byway, Ohio's Hill Country Heritage Area

Coordinates:
38.98716° N, 82.53198° W

Distance to Project:
415.1 feet

Elevation:
722.6 feet



Viewpoint 32

View looking east-southeast from US Highway 35 in the Township of Bloomfield, Jackson County, Ohio

Landscape Similarity Zone:
Developed

User Group:
Local Residents, Through-Travelers, Tourists/Recreational Users

Visually Sensitive Resource(s):
US Hwy 35, Welsh Scenic Byway, Ohio's Hill Country Heritage Area

Coordinates:
38.99656° N, 82.54618° W

Distance to Project:
.76 mile

Elevation:
753.8 feet

Dixon Run Solar

Bloomfield Township, Jackson County, Ohio

Visual Resource Assessment

Appendix B

Location of Visually Sensitive Resources