

Appendix C. Visual Simulations



Note: The image photograph series above was captured from State Route 317 panning clockwise from northeast (left) to south (right).



VIEWPOINT 17

State Route 327

VIEWPOINT INFORMATION

Location: State Route 327

Town: Bloomfield

County: Jackson

Latitude: 39.02264° N

Longitude: 82.52818° W

Viewing Distance*: 6,006.5 feet (1.1 miles)

VISUAL CHARACTER INFORMATION

Landscape Similarity Zone: Developed

Distance Zone: Foreground

Viewer/User Group(s): Local Residents, Through-Travelers

Visually Sensitive Resource(s): Ohio's Hill Country Heritage Area, State Rte 327

PHOTOGRAPH INFORMATION

Date Taken: July 14, 2021

Time: 11:44 AM

Camera: Nikon D7200

Resolution: 24.1 Megapixels

Lens Focal Length (35mm equivalent): 51 mm

Camera Elevation: 694 feet

Field of View: 39.2 degrees

View Orientation: South-Southeast

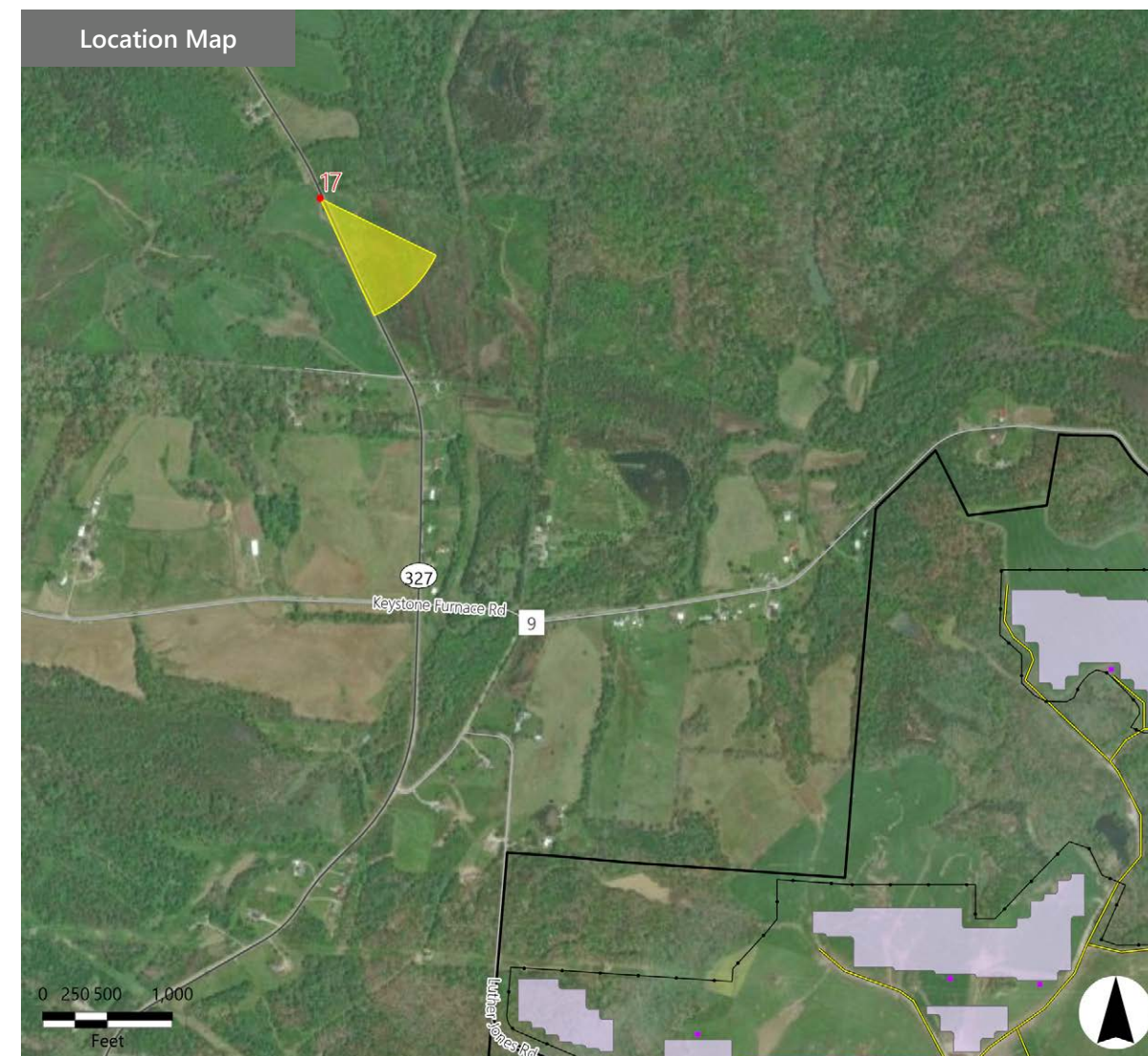
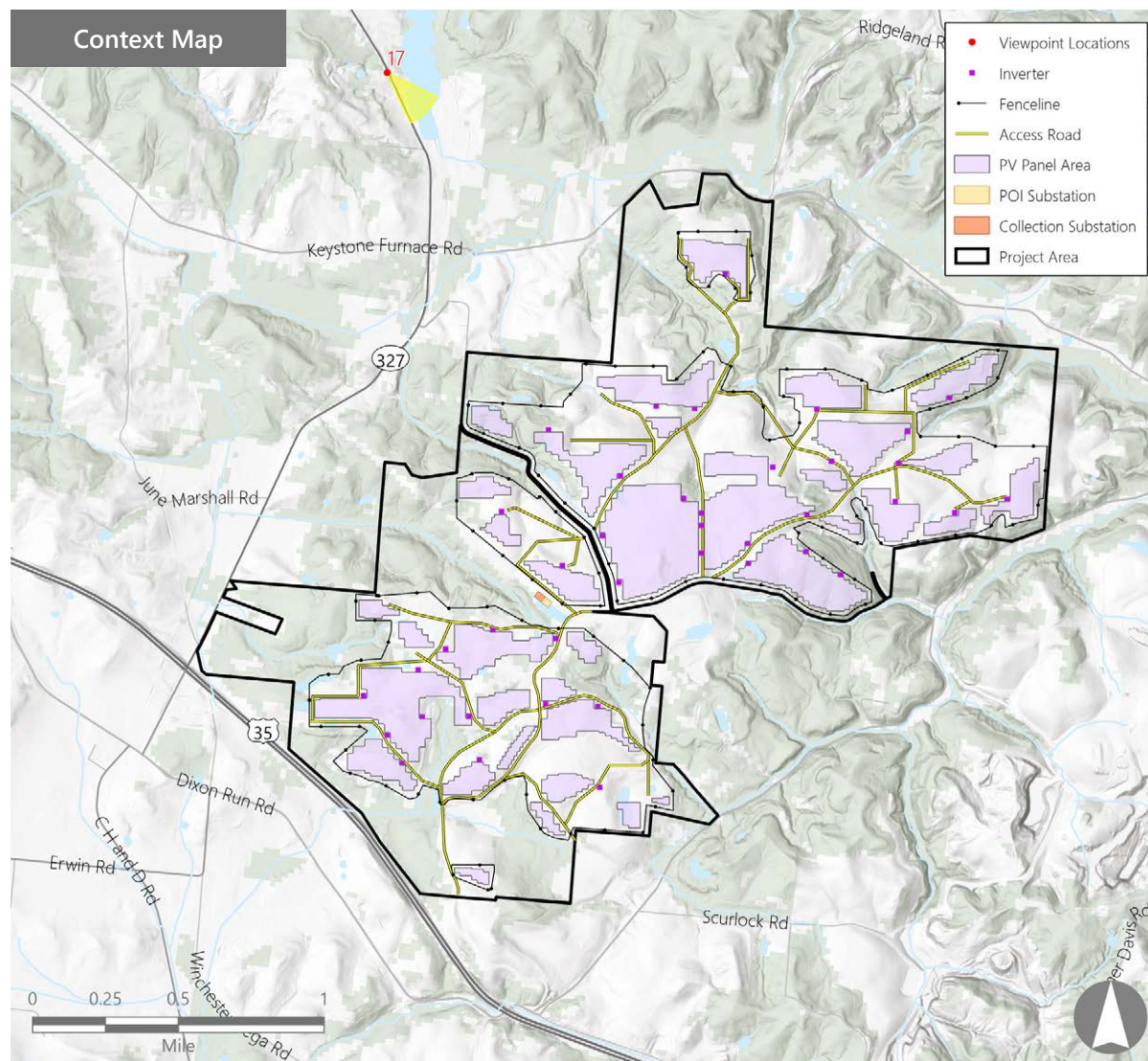
Printed Size: 10" x 15"

Viewing Distance:** 22"

NOTES

*Distance as measured from the viewpoint to the Facility (in feet) within the simulated photograph's field of view

**The simulation is at the correct perspective when printed on an 11-by-17 sheet at full scale, and viewed approximately 22 inches from the eye of the viewer.



Dixon Run Solar

Bloomfield Township, Jackson County, Ohio

Visual Resource Assessment

EXISTING CONDITIONS



0 1 in 2 in
This scale is designed to insure the simulation images are printed at the intended size.

VIEWPOINT 17
State Route 317

Dixon Run Solar
Bloomfield Township, Jackson County, Ohio
EDR

Note: Printed at actual size, the resulting simulation image is 15 inches wide by 10 inches high. At this size and focal length, the simulation should be viewed from a distance 22 inches from the eye of the viewer.

SIMULATION (INSTALLATION)



0 1 in 2 in
This scale is designed to insure the simulation images are printed at the intended size.

VIEWPOINT 17
State Route 317

Dixon Run Solar
Bloomfield Township, Jackson County, Ohio
EDR

Note: Printed at actual size, the resulting simulation image is 15 inches wide by 10 inches high. At this size and focal length, the simulation should be viewed from a distance 22 inches from the eye of the viewer.

Appendix C. Visual Simulations

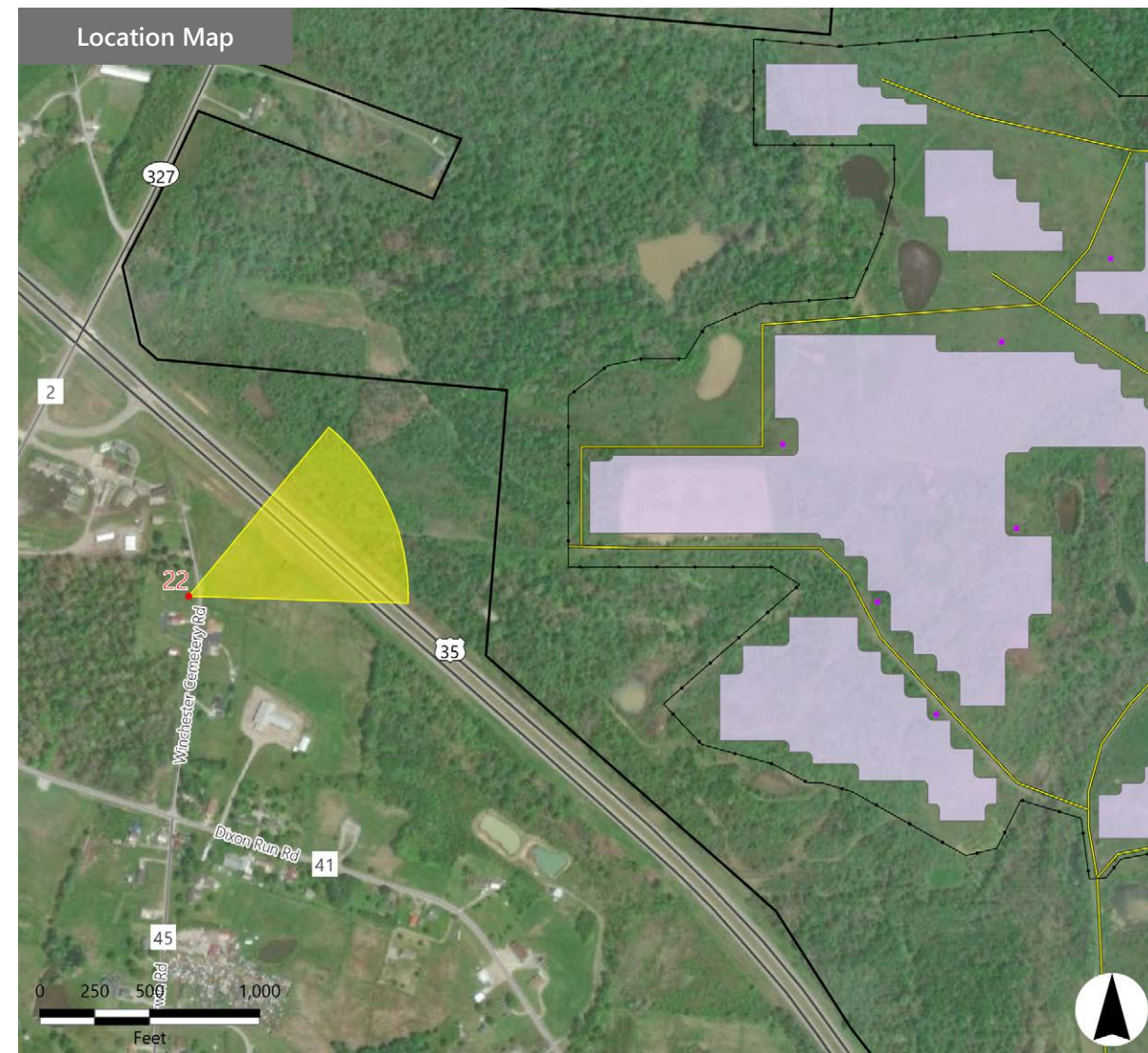
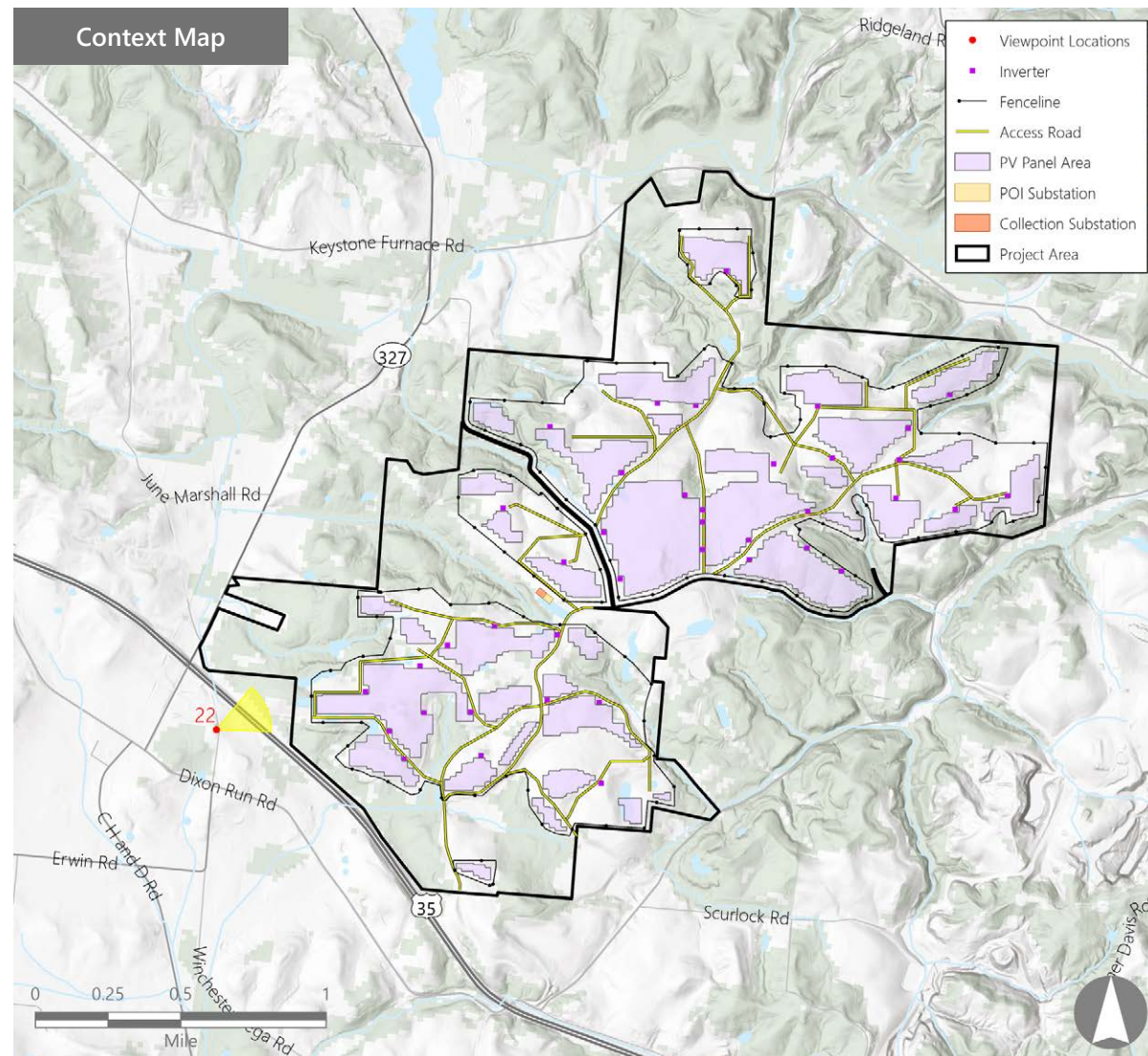


Note: The image photograph series above was captured from Winchester Cemetery Road panning clockwise from northwest (left) to east (right).

VIEWPOINT 22 Winchester Cemetery Road

VIEWPOINT INFORMATION

Location: Winchester Cemetery Road
Town: Bloomfield
County: Jackson
Latitude: 38.98984° N
Longitude: 82.53922° W
Viewing Distance*: 1,734.5 feet



VISUAL CHARACTER INFORMATION

Landscape Similarity Zone: Forest
Distance Zone: Near-foreground
Viewer/User Group(s): Local Residents
Visually Sensitive Resource(s):
 Winchester Cemetery, Rocky Hill, Winchester, US Hwy 35, Welsh Scenic Byway, Ohio's Hill Country Heritage Area

PHOTOGRAPH INFORMATION

Date Taken: July 14, 2021
Time: 2:00 PM
Camera: Nikon D7200
Resolution: 24.1 Megapixels
Lens Focal Length (35mm equivalent): 36 mm
Camera Elevation: 768 feet
Field of View: 52.2 degrees
View Orientation: East-Northeast
Printed Size: 10" x 15"
Viewing Distance:** 15"

NOTES

*Distance as measured from the viewpoint to the Facility (in feet) within the simulated photograph's field of view

**The simulation is at the correct perspective when printed on an 11-by-17 sheet at full scale, and viewed approximately 15 inches from the eye of the viewer.

Dixon Run Solar

Bloomfield Township, Jackson County, Ohio

Visual Resource Assessment

EXISTING CONDITIONS



0 1 in 2 in
This scale is designed to insure the simulation images are printed at the intended size.

VIEWPOINT 22
Winchester Cemetery Road

Dixon Run Solar
Bloomfield Township, Jackson County, Ohio



Note: Printed at actual size, the resulting simulation image is 15 inches wide by 10 inches high. At this size and focal length, the simulation should be viewed from a distance 15 inches from the eye of the viewer.

SIMULATION (INSTALLATION)



0 1 in 2 in
This scale is designed to insure the simulation images are printed at the intended size.

VIEWPOINT 22
Winchester Cemetery Road

Dixon Run Solar
Bloomfield Township, Jackson County, Ohio



Note: Printed at actual size, the resulting simulation image is 15 inches wide by 10 inches high. At this size and focal length, the simulation should be viewed from a distance 15 inches from the eye of the viewer.

Appendix C. Visual Simulations



Note: The image photograph series above was captured from Luther Jones Road panning clockwise from northwest (left) to east (right).

VIEWPOINT 26

Luther Jones Road

VIEWPOINT INFORMATION

Location: Luther Jones Road

Town: Bloomfield

County: Jackson

Latitude: 38.99744° N

Longitude: 82.50806° W

Viewing Distance*: 92.9 feet

VISUAL CHARACTER INFORMATION

Landscape Similarity Zone: Cropland/Pasture

Distance Zone: Near-foreground

Viewer/User Group(s): Local Residents

Visually Sensitive Resource(s): Ohio's Hill Country Heritage Area

PHOTOGRAPH INFORMATION

Date Taken: July 14, 2021

Time: 2:40 PM

Camera: Nikon D7200

Resolution: 24.1 Megapixels

Lens Focal Length (35mm equivalent): 36 mm

Camera Elevation: 810 feet

Field of View: 51.2 degrees

View Orientation: East-Northeast

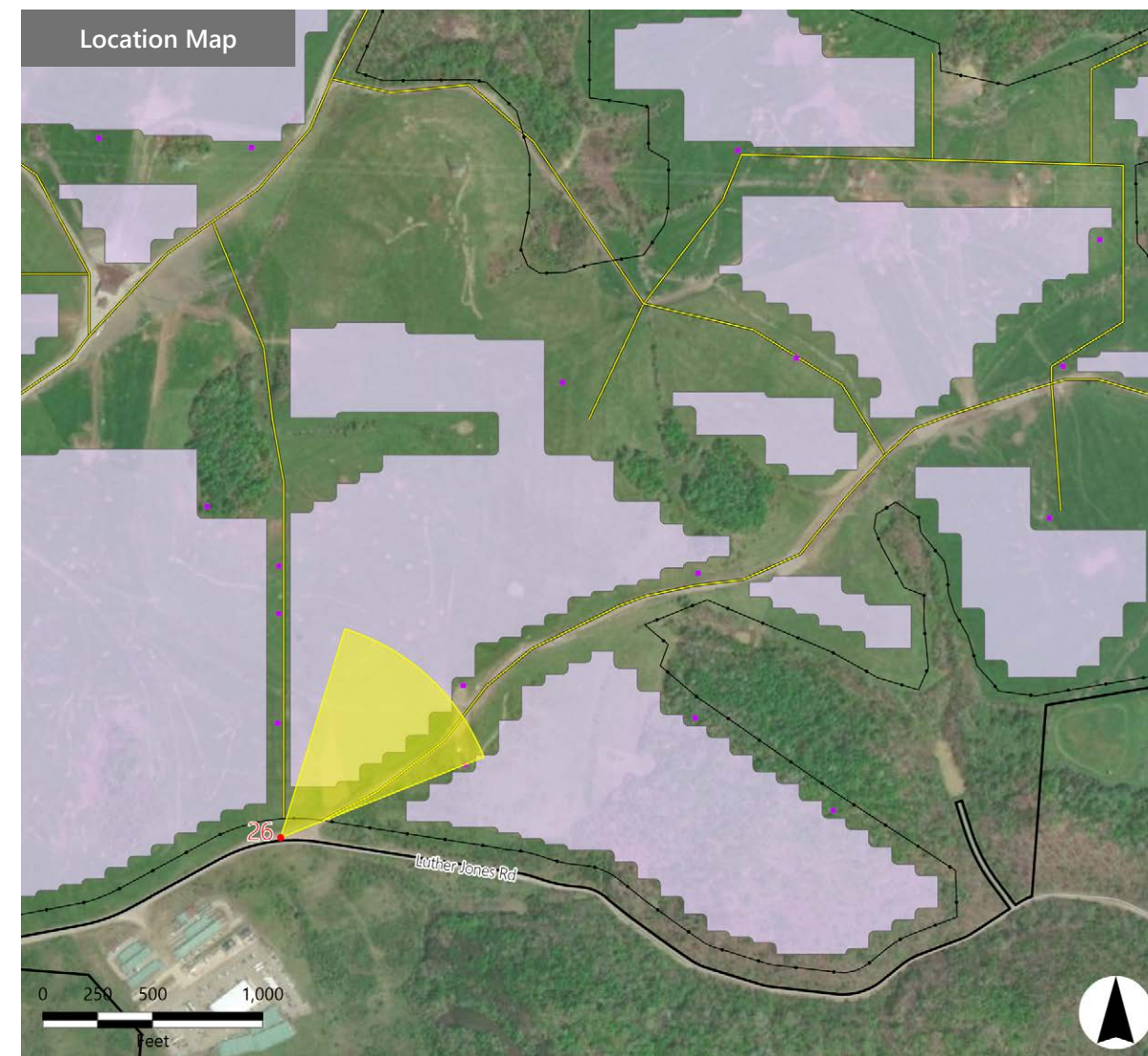
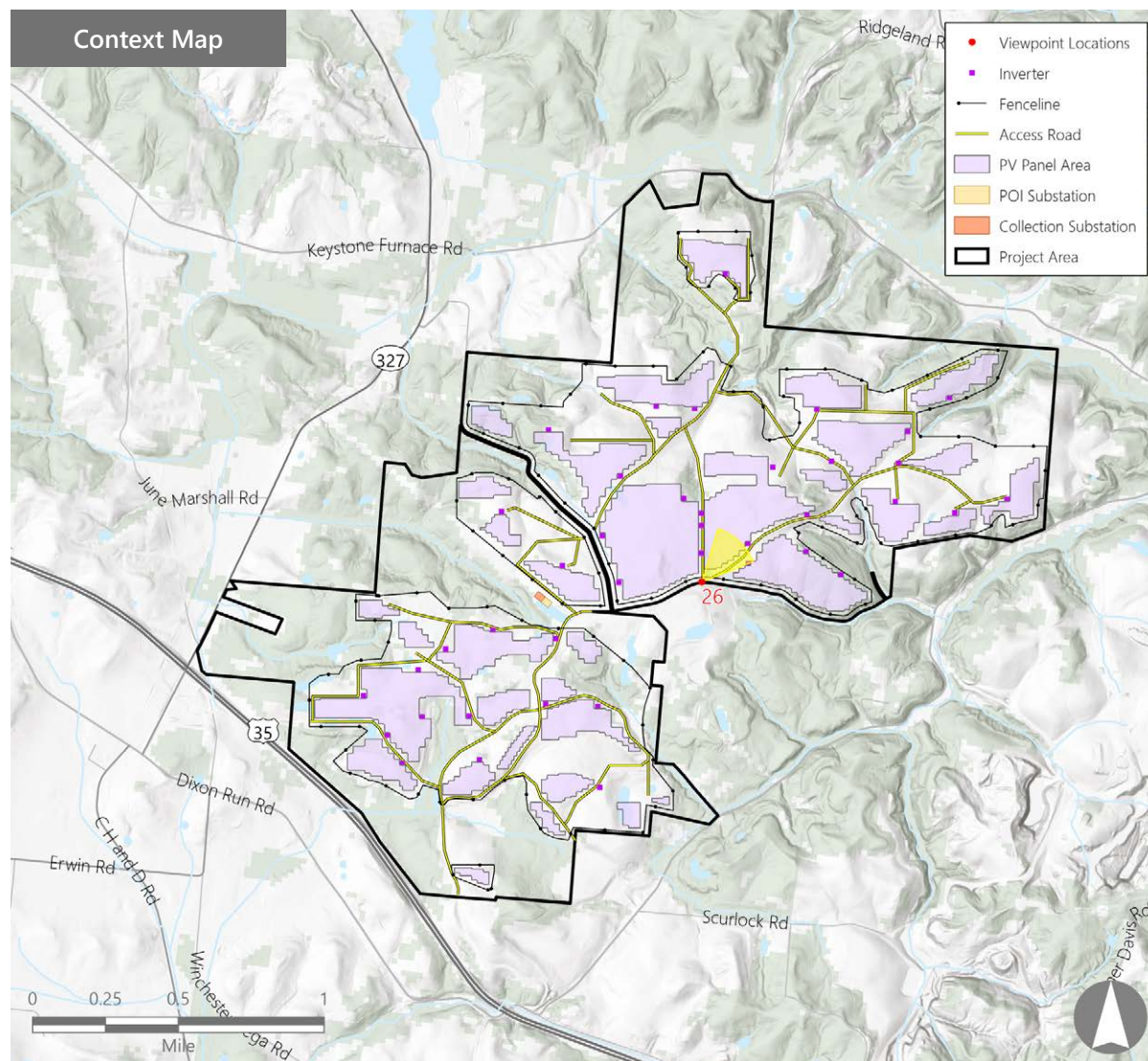
Printed Size: 10" x 15"

Viewing Distance:** 15"

NOTES

*Distance as measured from the viewpoint to the Facility (in feet) within the simulated photograph's field of view

**The simulation is at the correct perspective when printed on an 11-by-17 sheet at full scale, and viewed approximately 15 inches from the eye of the viewer.



Dixon Run Solar

Bloomfield Township, Jackson County, Ohio

Visual Resource Assessment

EXISTING CONDITIONS



0 1 in 2 in
This scale is designed to insure the simulation images are printed at the intended size.

VIEWPOINT 26
Luther Jones Road

Dixon Run Solar
Bloomfield Township, Jackson County, Ohio



Note: Printed at actual size, the resulting simulation image is 15 inches wide by 10 inches high. At this size and focal length, the simulation should be viewed from a distance 15 inches from the eye of the viewer.

SIMULATION (INSTALLATION)



0 1 in 2 in
This scale is designed to insure the simulation images are printed at the intended size.

VIEWPOINT 26
Luther Jones Road

Dixon Run Solar
Bloomfield Township, Jackson County, Ohio



Note: Printed at actual size, the resulting simulation image is 15 inches wide by 10 inches high. At this size and focal length, the simulation should be viewed from a distance 15 inches from the eye of the viewer.

Appendix C. Visual Simulations



Note: The image photograph series above was captured from Luther Jones Road panning clockwise from northwest (left) to east (right).

VIEWPOINT 28

Luther Jones Road

VIEWPOINT INFORMATION

Location: Luther Jones Road

Town: Bloomfield

County: Jackson

Latitude: 38.99740° N

Longitude: 82.51409° W

Viewing Distance*: 162.9 feet

VISUAL CHARACTER INFORMATION

Landscape Similarity Zone: Cropland/Pasture

Distance Zone: Near-foreground

Viewer/User Group(s): Local Residents

Visually Sensitive Resource(s): Ohio's Hill Country

Heritage Area

PHOTOGRAPH INFORMATION

Date Taken: July 14, 2021

Time: 11:44 AM

Camera: Nikon D7200

Resolution: 24.1 Megapixels

Lens Focal Length (35mm equivalent): 36 mm

Camera Elevation: 877 feet

Field of View: 53.6 degrees

View Orientation: North-Northeast

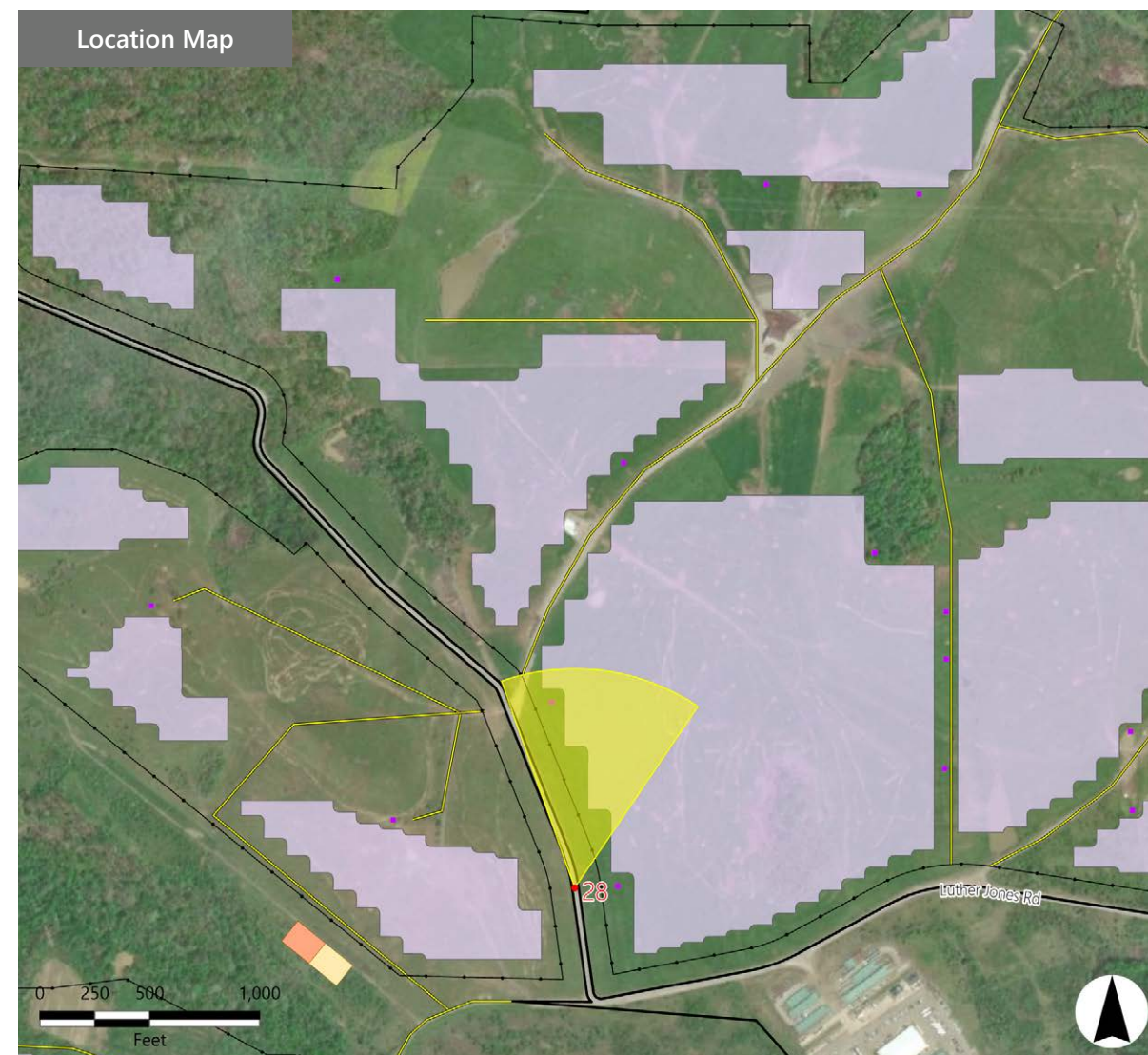
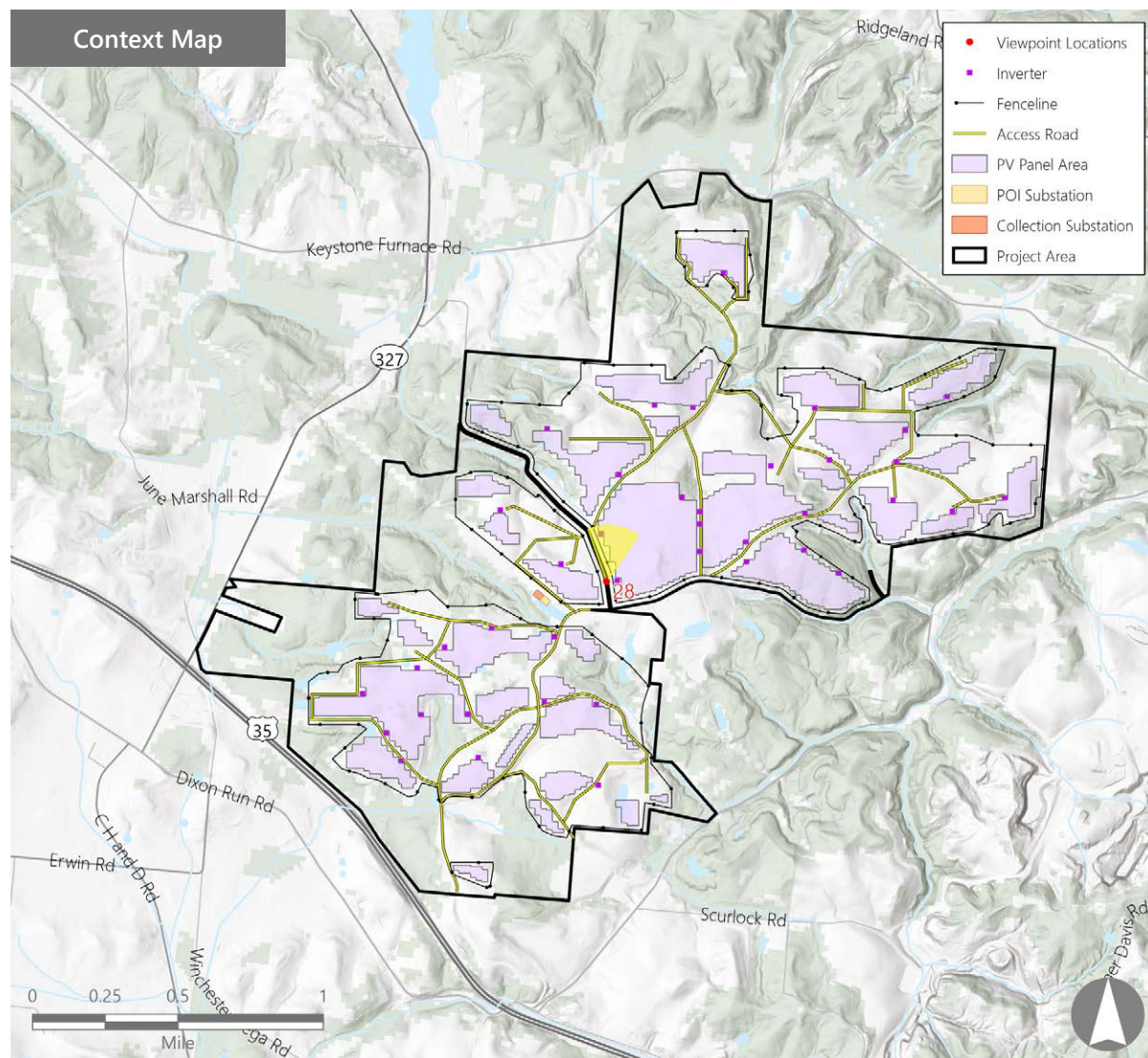
Printed Size: 10" x 15"

Viewing Distance:** 15"

NOTES

*Distance as measured from the viewpoint to the Facility (in feet) within the simulated photograph's field of view

**The simulation is at the correct perspective when printed on an 11-by-17 sheet at full scale, and viewed approximately 15 inches from the eye of the viewer.



Dixon Run Solar

Bloomfield Township, Jackson County, Ohio

Visual Resource Assessment

EXISTING CONDITIONS



Note: Printed at actual size, the resulting simulation image is 15 inches wide by 10 inches high. At this size and focal length, the simulation should be viewed from a distance 15 inches from the eye of the viewer.

0 1 in 2 in
This scale is designed to insure the simulation images are printed at the intended size.

VIEWPOINT 28
Luther Jones Road

Dixon Run Solar
Bloomfield Township, Jackson County, Ohio
EDR

SIMULATION (INSTALLATION)



Note: Printed at actual size, the resulting simulation image is 15 inches wide by 10 inches high. At this size and focal length, the simulation should be viewed from a distance 15 inches from the eye of the viewer.

0 1 in 2 in
This scale is designed to insure the simulation images are printed at the intended size.

VIEWPOINT 28
Luther Jones Road

Dixon Run Solar
Bloomfield Township, Jackson County, Ohio

